



## Two Bedroom First Floor Maisonette

**Stubbs Moor Road, Farnborough, Hampshire, GU14 8RH**

Offers in Excess of: £250,000

- Two Bedroom First Floor Maisonette
- Spacious Lounge/Dining Room
- Good Sized Private Rear Garden
- New Boiler Fitted by Current Owners
- Walking Distance from Farnborough Station
- Gas Central Heating and Double Glazed
- Loft Space for Storage
- EPC : D (67)



## Description

Situated in the popular West Heath area of Farnborough, just one mile walk from the mainline station, is this well presented two bedroom maisonette updated by the current owners.

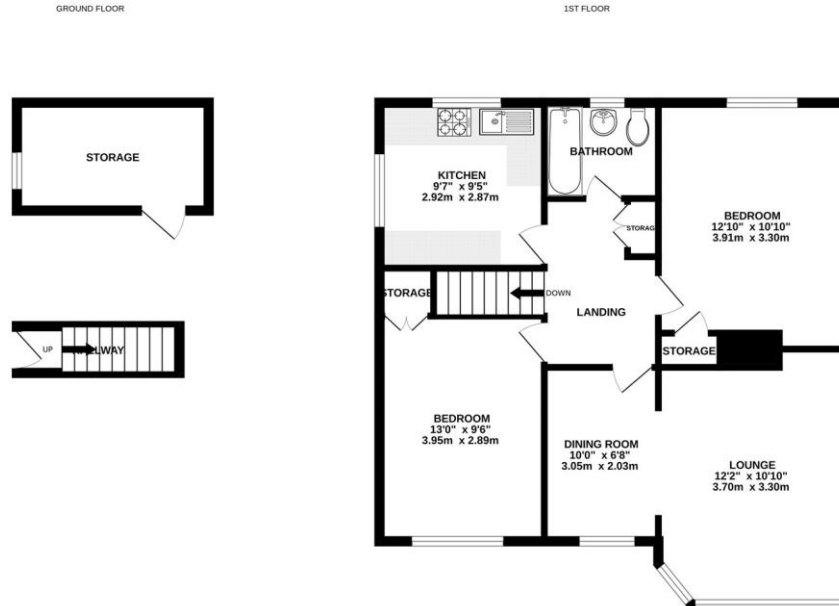
You enter via a good sized entrance hallway with loft access, to the front is a spacious double aspect lounge dining room. The kitchen is rear aspect with views over the garden.

There are two generous double bedrooms and a family bathroom.

## Outside

Outside to the rear is an ample brick built garden shed and a rear garden mainly laid to lawn.

## Floorplan



Whilst every attempt has been made to ensure the accuracy of the floorplans contained here, measurements of doors, windows, rooms and any other items are approximate and no responsibility is taken for any error, omission or mis-statement. This plan is for illustrative purposes only and should be used as such by any prospective purchaser. The services, systems and appliances shown have not been tested and no guarantee as to their operability or efficiency can be given.  
Made with Metropac 2024



TO ARRANGE A VIEWING PLEASE CONTACT:  
Tel: **01252 361550** or Email: **info@bridges.co.uk**



Important Notice - These particulars are set out as a general outline only for the guidance of intended purchasers/tenants and do not form part of any offer or contract and must not be relied upon as statements or representations of fact. Purchasers/Tenants must satisfy themselves by inspection or otherwise as to their correctness.