



Four Bedroom Detached House

22 Shaftesbury Close, Bracknell, Berkshire, RG12 9PX

Offers in excess of: £575,000

- Four Bedrooms
- No Onward Chain
- Plenty of Potential
- Cloakroom
- Family Bathroom
- Detached Double Garage
- Enclosed Rear Garden
- EPC: D (68)



Description

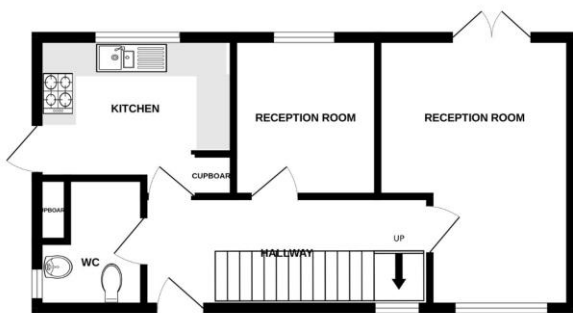
A well positioned detached family home located in cul-de-sac and offered for sale with no onward chain. Offering spacious accommodation to include four bedrooms, kitchen, dining room and dual aspect living room. The property offers plenty of scope to improve further. Accessible for Bracknell Lexicon Shopping centre and mainline railway station offering excellent links to London and the South.

Outside

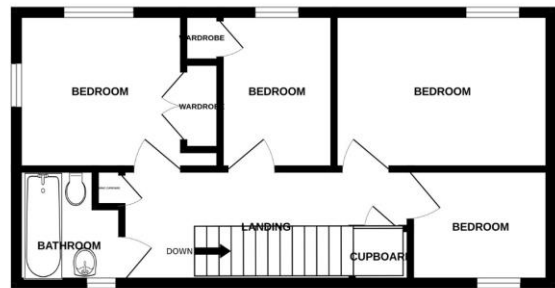
Offering a degree of privacy and seclusion the garden is mainly laid to lawn enclosed by wood panel fence accessed via single gate and access to the detached double garage.

Floorplan

GROUND FLOOR



1ST FLOOR



Whilst every attempt has been made to ensure the accuracy of the floorplan contained here, measurements of doors, windows, rooms and any other items are approximate and no responsibility is taken for any error, omission or mis-statement. This plan is for illustrative purposes only and should be used as such by any prospective purchaser. The services, systems and appliances shown have not been tested and no guarantee as to their operability or efficiency can be given.
Made with Metropix ©2024



To arrange a viewing please contact:
Tel: 01344 962150
Email: