



Two Bedroom Terraced House

Hexham Close, Owlsmoor, Sandhurst, Berkshire, GU47 0QP

Offers in Excess of: £290,000

- Two Bedroom
- Back to Back Terraced House
- Large Double Aspect Living Room
- Double Bedroom with Built-In Wardrobes
- Low Maintenance Front Garden
- Refurbished Galley Kitchen
- Allocated Parking
- EPC : D (68)



Description

Located in the highly desired Heath Park Development in Owlsmoor. This two bedroom back-to-back terraced property offer spacious accommodation with a front garden with a decking area and an additional bit of land on the side ideal for a shed and storage.

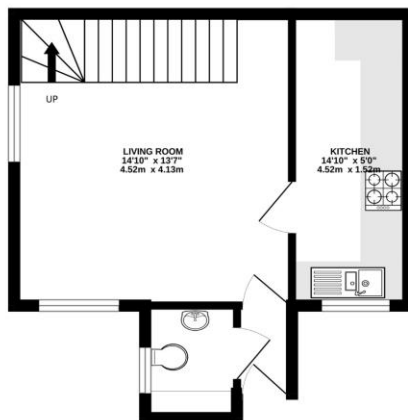
The accommodation of this ideal first time purchase comprises of a downstairs cloakroom, a large double aspect living room and a refurbished galley style kitchen with ample storage and worktop space. Upstairs you will find two bedrooms with the principal bedroom benefitting from double built-in wardrobes. There is also a white three piece family bathroom suite.

Outside

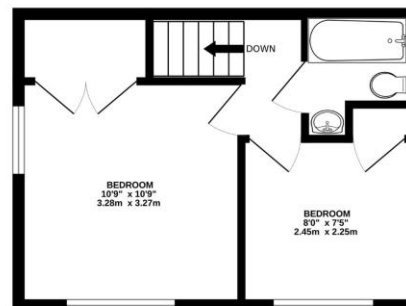
Externally to the front of the property is a low maintenance garden enclosed by wooden panel fencing and is mainly decked and flower beds. To the side of the property is also an extra bit of patioed space ideal for a shed or storage. Just outside of the garden is an allocated parking space to the property as well as ample on street parking for additional vehicles.

Floorplan

GROUND FLOOR



1ST FLOOR



Whilst every attempt has been made to ensure the accuracy of the floorplan contained here, measurements of doors, windows, rooms and any other items are approximate and no responsibility is taken for any error, omission or mis-statement. This plan is for illustrative purposes only and should be used as such by any prospective purchaser. The services, systems and appliances shown have not been tested and no guarantee as to their operability or efficiency can be given.
Made with Metropix ©2024



To arrange a viewing please contact:

Tel: 01252 361550

Email: info@bridges.co.uk

Important Notice - These particulars are set out as a general outline only for the guidance of intended purchasers and do not form part of any offer or contract and must not be relied upon as statements or representations of fact. Purchasers must satisfy themselves by inspection or otherwise as to their correctness.