



Four Bedroom End of Terrace, Town House House

Ferndown Close, Beggarwood, Basingstoke, Hampshire, RG22 4SE

Offers Over: £425,000

- Four Bedroom End of Terrace
- Practical Layout
- Refitted Kitchen
- Large Dual Aspect Living Room
- Desirable Location
- Larger than Average Garage
- Off Road Parking
- EPC: C (73)



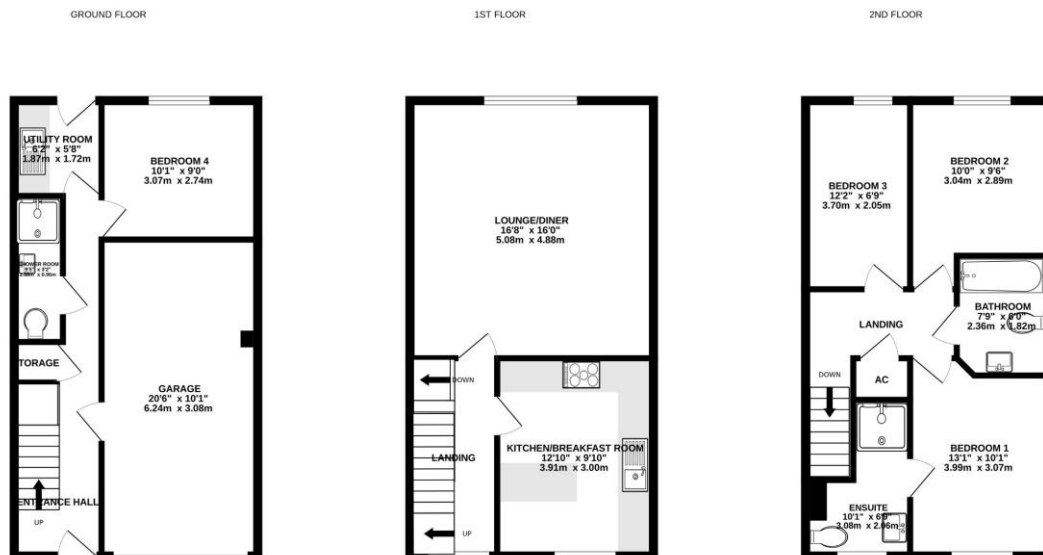
Description

Bridges Estate Agents are delighted to offer to the market this spacious four bedroom town house, situated in the popular development of Beggarwood. The ground floor accommodation comprises of a long, spacious entrance hall leading to bedroom four, which has its own shower room adjacent to it. This flexible living arrangement could be suitable for any family that has relatives stay with them, or for those who have older children that want their own living space. There is also a utility room on the ground floor and direct access to the integral garage, which is both wider and deeper than a normal single garage. The first floor offers a recently re-fitted, stunning modern kitchen/breakfast room that is spacious and light. To the rear of the property is a well-proportioned living room that benefits from dual aspect windows, keeping this room airy and light. The top floor benefits from a spacious principal bedroom with en-suite shower, a second bedroom that is also a generous double room, and a third bedroom which the owners currently use as a home office. The other two bedrooms are supported by a modern family bathroom. The property also benefits from recently installed double glazing, as well as a new front and rear door too. One of the standout features of this home is the location within the road itself. There are no houses directly facing you and the landscaped rear garden is low maintenance - as well as being equally as private as the front which is a great bonus on a modern development.

Outside

Situated on one of Basingstoke`s more popular developments, Britannia Drive gives you access to M3 junction 7, A303, A30 and A33, along with the mainline railway to London Waterloo from Basingstoke Town Centre. Local doctors surgery, chemist and retail parks are close to hand, with the main shopping centre Festival Place a short drive away - offering diverse shopping and restaurant dining. There is a local golf club and an abundance of country walks close by along with The Holly Blue pub.

Floorplan



Whilst every attempt has been made to ensure the accuracy of the floorplan contained here, measurements of doors, windows, rooms and any other items are approximate and no responsibility is taken for any error, omission or mis-statement. This plan is for illustrative purposes only and should be used as such by any prospective purchaser. The services, systems and appliances shown have not been tested and no guarantee as to their operability or efficiency can be given.
Made with Metropix ©2024



To arrange a viewing please contact:

Tel: 01256 880001

Email: info@bridges.co.uk

Important Notice - These particulars are set out as a general outline only for the guidance of intended purchasers and do not form part of any offer or contract and must not be relied upon as statements or representations of fact. Purchasers must satisfy themselves by inspection or otherwise as to their correctness.