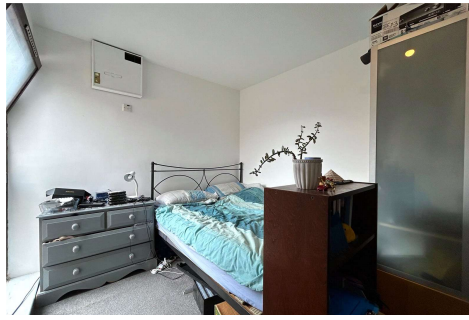


One Bedroom Apartment Greyhound Close, Ash, GU12 6PU

Price: £180,000

- One Bedroom
- No Onward Chain
- Second Floor Apartment
- Leasehold
- Parking
- Double Bedroom
- Estimated Rental Price £925pcm
- EPC: D (62)



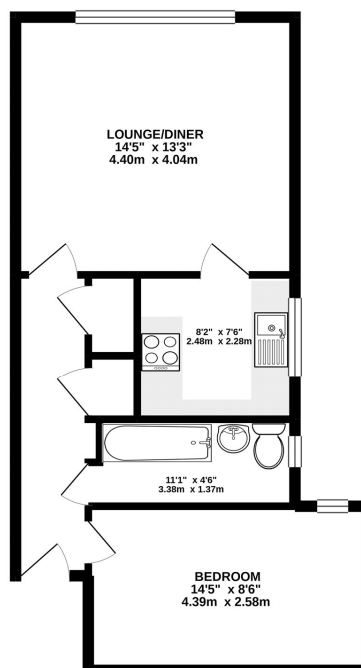
Description

Located within walking distance to Ash mainline station is this spacious one bedroom second floor apartment. The property is only a short walk to local amenities, and is also walking distance to Ash mainline station - which offers access into Guildford, London and is also a direct rail link to London Gatwick. The apartment boasts a spacious living room, family bathroom suite, fitted kitchen, a generous size double bedroom and built in storage cupboards off of the hallway.

Outside

The outside boasts a communal garden, intercom entry system, external brick-built storage building and allocated parking.

Floorplan



Whilst every attempt has been made to ensure the accuracy of the floorplan contained here, measurements of doors, windows, rooms and any other items are approximate and no responsibility is taken for any error, omission or mis-statement. This plan is for illustrative purposes only and should be used as such by any prospective purchaser. The services, systems and appliances shown have not been tested and no guarantee as to their operability or efficiency can be given.
Made with Metropac ©2020



To arrange a viewing please contact:

Tel: 01252 361550

Email: info@bridges.co.uk

Important Notice - These particulars are set out as a general outline only for the guidance of intended purchasers and do not form part of any offer or contract and must not be relied upon as statements or representations of fact. Purchasers must satisfy themselves by inspection or otherwise as to their correctness.