



## Two Bedroom End of Terrace House Guildford Road, Farnham, Surrey, GU9 9PY

Price: £375,000

- Two Bedroom Character Cottage
- Spacious Living Room
- Principal Bedroom with En Suite
- Original Features
- Recently Refurbished
- Private Courtyard Garden
- No Onward Chain
- EPC : TBC





## Description

A delightful two bedroom period cottage within a mile's walking distance of Farnham town centre and train station. This property benefits from a spacious open plan living/dining room to a small kitchen with direct access to its own lovely sunny courtyard with a stream running through it. Upstairs is a spacious principal bedroom with its own en suite, the second bedroom has access to the first floor shower room.

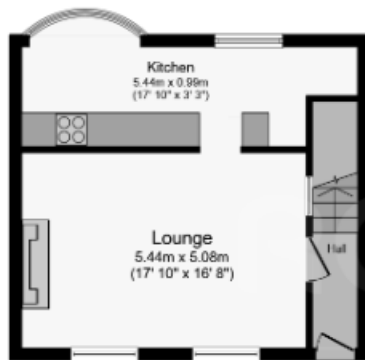
## Outside

The rear courtyard benefits from a sunny aspect which is unoverlooked and has a stream running through the side of it. There is an outdoor brick built storage shed. Parking for one is available to the side of the property.

## Floorplan

Floorplan

 View in fullscreen



Ground Floor



First Floor



Second Floor



To arrange a viewing please contact:

Tel: 01252 361550

Email: [info@bridges.co.uk](mailto:info@bridges.co.uk)