



One Bedroom Ground Floor Apartment

Beumaris Parade, Balmoral Drive, Frimley, Camberley, GU16 8UH

Price: £215,000

- One Double Bedroom
- Ground Floor Maisonette
- Spacious Lounge/Dining Room
- Direct Access to a Communal Garden
- Allocated Parking
- Close to Amenities
- Estimated Rental Price: £1,100 pcm
- EPC: C (78)



Description

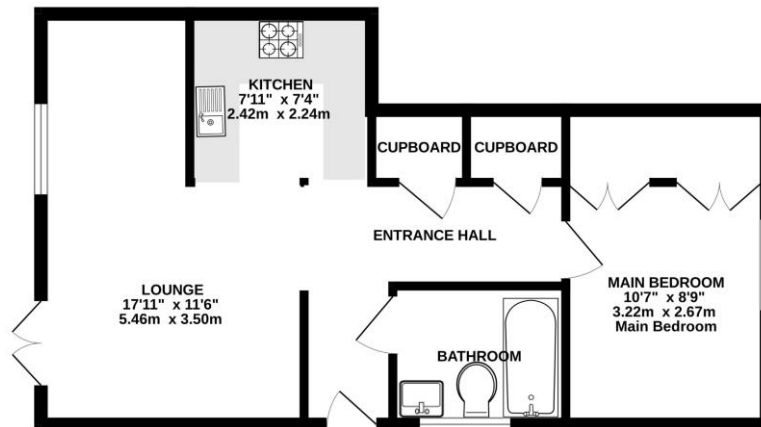
A stunning ground floor maisonette, situated to the side of this popular development, benefitting from direct access via patio doors onto the communal gardens. The property is located within easy reach of local amenities, Frimley high street and Frimley Park Hospital. The property is accessed via a spacious hallway which leads to a spacious lounge/dining room with double doors onto the communal garden. There is a fitted kitchen and a spacious bathroom plus a double bedroom.

Outside

The maisonette is accessed via a private pathway which is enclosed by mature borders. There is direct access to the communal gardens plus allocated parking and plenty of visitor parking available.

Floorplan

GROUND FLOOR



Whilst every attempt has been made to ensure the accuracy of the floorplan contained here, measurements of doors, windows, rooms and any other items are approximate and no responsibility is taken for any error, omission or misstatement. This plan is for illustrative purposes only and should be used as such by any prospective purchaser. The services, systems and appliances shown have not been tested and no guarantee as to their operability or efficiency can be given.
Made with Metriplex 12/2021



To arrange a viewing please contact:

Tel: 01252 361550

Email: info@bridges.co.uk

Important Notice - These particulars are set out as a general outline only for the guidance of intended purchasers and do not form part of any offer or contract and must not be relied upon as statements or representations of fact. Purchasers must satisfy themselves by inspection or otherwise as to their correctness.