



Two Bedroom Terraced House

Rowner Crescent, Sherfield-on-Loddon, Hook, Hampshire, RG27 0SW

Price: £350,000

- Two Bedrooms
- Modern Mid Terrace Home
- Downstairs Cloakroom
- En Suite Shower Room
- Garage with Parking
- Low Maintenance Rear Garden
- Ideal First Time Buy or Investment
- EPC: B (83)



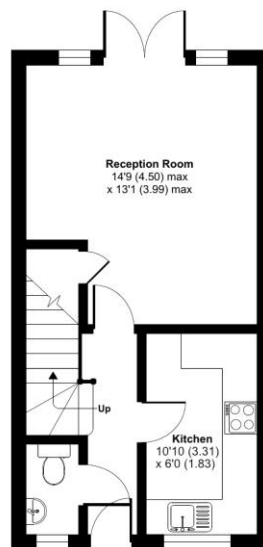
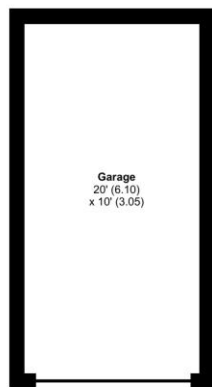
Description

Located in the popular Sherfield Park development in Sherfield-on-Loddon, this modern and inviting two bedroom mid terrace home is in excellent condition. The property features two spacious bedrooms: the front bedroom is bright and welcoming, while the principal bedroom offers an en suite shower room and built in wardrobes. The generous living room, which opens onto the rear through stylish French doors with side windows, seamlessly connects to the garden enhancing the home's appeal and providing a great space for relaxing or entertaining.

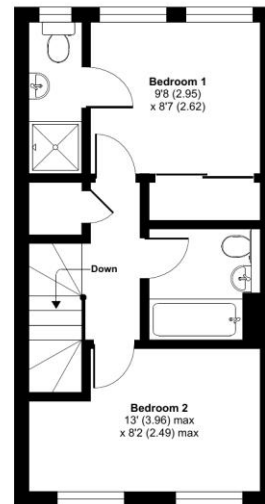
Outside

The property boasts an enclosed, low maintenance rear garden, featuring a well maintained lawn and vibrant raised planters. A generously sized patio provides an ideal space for entertaining and enjoying outdoor gatherings. With convenient rear access, the garden is perfect for relaxation and socialising. Additionally, the property benefits from a garage with an up and over door, offering secure storage or parking, with an ample parking space available in front of the garage. Just a short walk away, you'll find playing fields, a children's park, and a basketball court, offering plenty of recreational options for all ages.

Floorplan



GROUND FLOOR



FIRST FLOOR

Rowner Crescent, RG27

Approximate Area = 706 sq ft / 65.6 sq m
Garage = 200 sq ft / 18.6 sq m
Total = 906 sq ft / 84.2 sq m
For identification only - Not to scale



Floor plan produced in accordance with RICS Property Measurement Standards incorporating International Property Measurement Standards (IPMS2 Residential). ©victorcom 2024. Produced for Bridges Estate Agents. REF: 1174504



To arrange a viewing please contact:

Tel: 01256 769999

Email: info@bridges.co.uk

Important Notice - These particulars are set out as a general outline only for the guidance of intended purchasers and do not form part of any offer or contract and must not be relied upon as statements or representations of fact. Purchasers must satisfy themselves by inspection or otherwise as to their correctness.