



## Four Bedroom Semi-Detached House

**Baileys Close, Blackwater, Camberley, Hampshire, GU17 0AT**

Guide Price: £400,000

- Four Bedrooms
- Cleverley Extended Family Home
- Cloakroom
- Refitted Kitchen
- Open Plan Living/Dining Room
- En Suite Shower Room
- Favoured Location
- EPC : D (58)



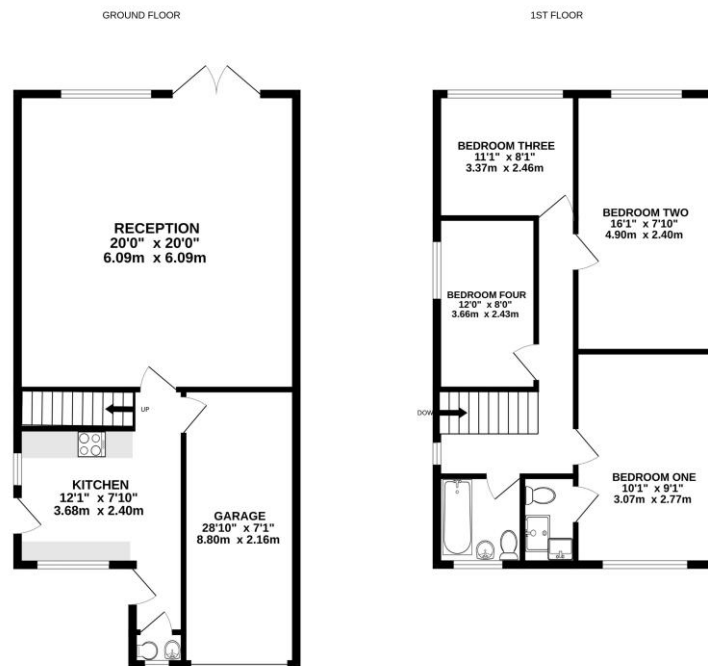
## Description

A cleverly extended family home offering superb accommodation over two floors and requiring cosmetic improvements. Comprising an entrance hall, a cloakroom, a refitted kitchen, and an open plan living/dining room. The first floor provides four double bedrooms, an en suite shower, and a family bathroom. Externally, there is off street parking leading to an integral garage.

## Outside

The rear garden has a paved and decked area with the remainder laid to lawn and fully enclosed.

## Floorplan



While every attempt has been made to ensure the accuracy of the floorplan contained here, measurements of doors, windows, rooms and any other items are approximate and no responsibility is taken for any error, omission or misstatement. This plan is for illustrative purposes only and should be used as such by any prospective purchaser. The services, systems and appliances shown have not been tested and no guarantee as to their quality or efficiency can be given.  
Made with Lettopix 12/24



To arrange a viewing please contact:

Tel: 01252 361550

Email: [info@bridges.co.uk](mailto:info@bridges.co.uk)

Important Notice - These particulars are set out as a general outline only for the guidance of intended purchasers and do not form part of any offer or contract and must not be relied upon as statements or representations of fact. Purchasers must satisfy themselves by inspection or otherwise as to their correctness.