



One Bedroom Apartment

Coombe Way, Farnborough, Hampshire, GU14 7GB

Price: £190,000

- One Double Bedroom
- Ground Floor Apartment
- Modern Kitchen and Bathroom
- Open Plan Living Space
- Private Garden
- Ideal for Town and Station
- No Onward Chain
- EPC : C (80)



Description

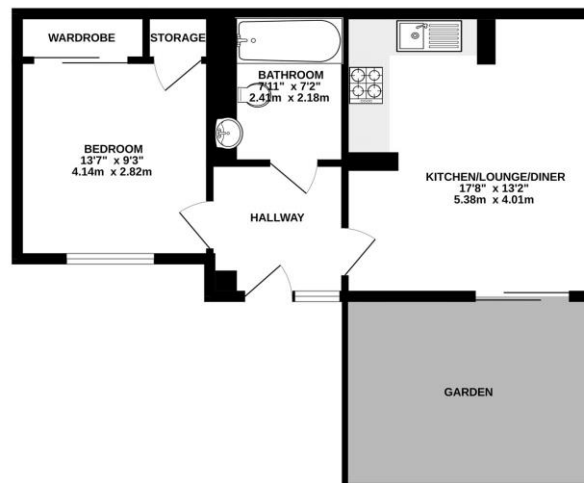
Situated within easy reach of Farnborough's main train station and town centre is this well presented one double bedroom ground floor apartment with its own front door. The accommodation comprises an open plan living room/kitchen with sliding doors providing access to the private garden. The fitted kitchen benefits from an integrated oven and hob. The double bedroom has a picture window letting in lots of natural light, and a fitted bathroom. The property in our opinion would make an ideal first time or investment purchase.

Outside

This property benefits from a private garden which is accessed via sliding doors from the living room. The development also offers a communal play park area. The property comes with a permit allowing the owner to park within the development.

Floorplan

GROUND FLOOR



Whilst every attempt has been made to ensure the accuracy of the description contained here, measurements of floors, ceilings, walls and any other items are approximate and are not intended to form any part of the contract. The services, systems and appliances shown have not been tested and are provided as is their condition or otherwise. Made with AutoCAD 2012



To arrange a viewing please contact:

Tel: 01252 361550

Email: info@bridges.co.uk

Important Notice - These particulars are set out as a general outline only for the guidance of intended purchasers and do not form part of any offer or contract and must not be relied upon as statements or representations of fact. Purchasers must satisfy themselves by inspection or otherwise as to their correctness.