



One Double Bedroom Apartment

Hillstead Court, Basingstoke, Hampshire, RG21 3PT

Price: £115,000

- One Double Bedroom
- First Floor Apartment
- Refitted Shower Room
- Refitted Kitchen
- Communal Gardens
- Fairfields Location
- Over 55's Complex
- EPC : B (81)



Description

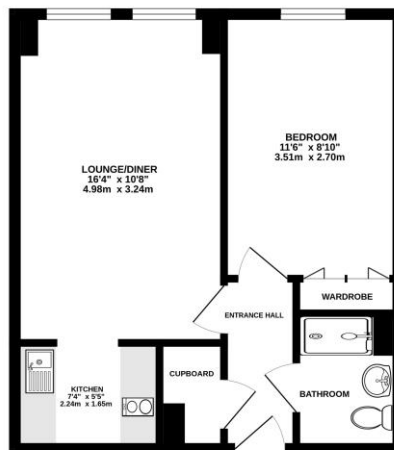
Offered to the market with no onward chain is this immaculate first floor one double bedroom over 55's apartment within Basingstoke's Town Centre. The accommodation includes an entrance hall, a storage cupboard, a refitted shower room (2017), a double bedroom with built in wardrobes and a window overlooking the gardens, and a spacious living room with two windows also looking out onto the beautiful green communal gardens. There is a refitted kitchen just off the living room with an electric hob, a fridge, a freezer, and a sink with a drainer. The complex also comprises communal facilities including a residents' lounge, a kitchen, a laundry room, and stores (useful for mobility scooters or bikes). Other benefits include recently fitted windows, a lift, and a house manager. The location is perfect for easy access to the town centre with its range of shops and restaurants, as well as Basingstoke main train station. There are local bus routes close by too, as well as some parkland areas within close proximity.

Outside

Externally there is residents and visitor parking to the front. To the rear there is a spacious, beautifully maintained communal garden with a patio, a seating area, and around the side washing lines.

Floorplan

FIRST FLOOR



Whilst every effort has been made to ensure the accuracy of the floorplan contained here, measurements of doors, windows, rooms and any other items are approximate and no responsibility is taken for any error or omission in the drawings. They are for guidance only and should be used as a guide only and not as a basis for any decision. The drawings, plans and specifications shown here are intended to be used as a guide only and not as a basis for any decision. They are for guidance only and should be used as a guide only and not as a basis for any decision. The drawings, plans and specifications shown here are intended to be used as a guide only and not as a basis for any decision.



To arrange a viewing please contact:

Tel: 01256 880001

Email: info@bridges.co.uk

Important Notice - These particulars are set out as a general outline only for the guidance of intended purchasers and do not form part of any offer or contract and must not be relied upon as statements or representations of fact. Purchasers must satisfy themselves by inspection or otherwise as to their correctness.