



Two Bedroom Apartment

Whetstone Road, Farnborough, Hampshire, GU14 9TH

Price: £240,000

- Two Double Bedrooms
- First Floor Apartment
- Generous Reception Room
- Gated Community
- Allocated Parking
- Ample Storage
- Close to Amenities
- EPC: C (79)



Description

Bridges Estate Agents of Farnborough are delighted to present this two double bedroom first floor apartment, located within a peaceful gated development.

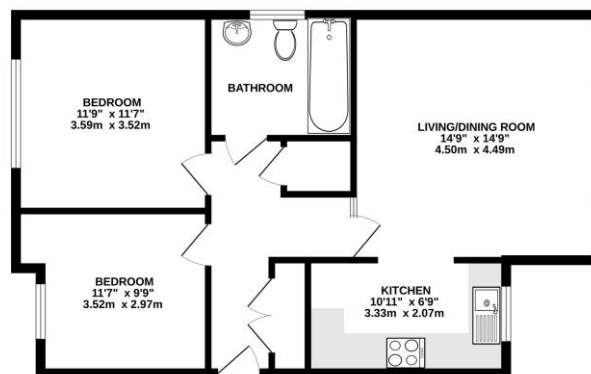
The development itself is secured via electronic gate, giving access to residents via its fob entry system and visitors via the secure telephone entry system. Franklin Court secures two buildings, with this particular apartment part of the smaller block of just six apartments. The property comprises two generous double bedrooms, a bathroom with an overhead shower and a window, a spacious living/dining room with a semi open plan kitchen with a fitted oven, hob and extractor fan, whilst still offering ample storage within the hallway.

Outside

The property benefits from allocated parking within the gated community, with visitor parking spaces also available. Franklin Court is just a short walk from a parade of shops, with Farnborough town centre just a short drive away. Here you'll find a range of shops, a retail park, public houses and restaurants as well as several supermarkets. Farnborough town centre is also home to Farnborough Main train station, ideally for anyone looking for mainline access into London Waterloo in approximately 36 minutes.

Floorplan

FIRST FLOOR



While every attempt has been made to ensure the accuracy of the floorplan contained here, measurements of doors, windows, stairs and any other items are approximate and not intended to be used for any purpose other than a general guide. This plan is for illustrative purposes only and should be used as such by any prospective purchaser. The agents, officers and applicants shall not be held liable and no guarantee is given in relation to the accuracy of the floorplan or any other information contained hereon. Made with Hoxiplex 02125



To arrange a viewing please contact:

Tel: 01252 361550

Email: info@bridges.co.uk

Important Notice - These particulars are set out as a general outline only for the guidance of intended purchasers and do not form part of any offer or contract and must not be relied upon as statements or representations of fact. Purchasers must satisfy themselves by inspection or otherwise as to their correctness.