

Four Bedroom Terraced House

Ventnor Terrace, Newport Road, Aldershot, Hampshire, GU12 4PD

Offers in the region of: £389,950

- Four Bedrooms
- Beautiful uPVC Sash Windows
- An Open Fire
- Set Over Three Floors
- Two Family Bathrooms
- Cul-de-Sac Location
- A Sociable Established Garden
- EPC: D (63)



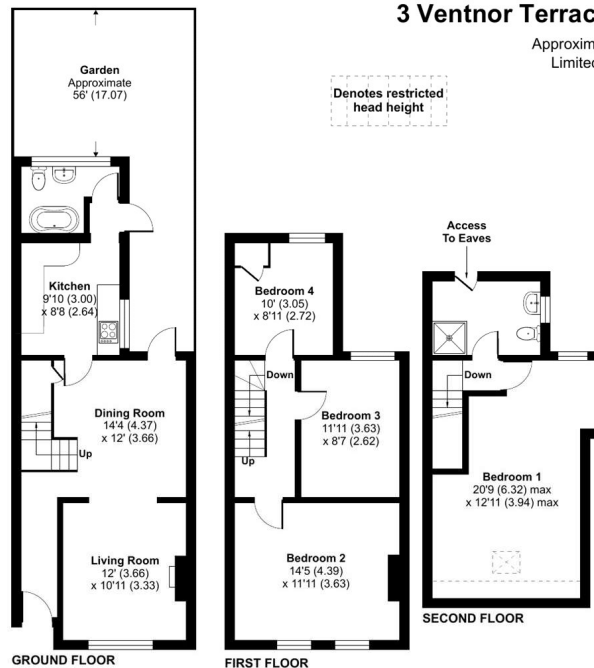
Description

A simply stunning family home, positioned in a cul-de-sac location, which has been the subject of many improvements by the current owners; all of which can be seen in abundance throughout. Set over three floors, and with internal accommodation presented in an exceptional order throughout, the property benefits from four bedrooms and two bathrooms, as well as a beautiful bright kitchen. On entering the light and airy hallway which starts the journey through this stunning home, you are lead through to the open plan lounge and dining area with sash windows and an open fire; the open plan living is simply the heart of the family home, offering any potential buyer a high gloss kitchen which opens onto the dining area. The first floor offers three generous bedrooms which are tastefully decorated and immaculately presented. The second floor boasts a further double bedroom with a stunning family bathroom; the views from this floor are simply breathtaking overlooking the rear garden. Bridges Estate Agents are delighted to offer this beautiful family home to the market and highly recommend viewing.

Outside

The property offers an attractive rear garden incorporating an area of lawn alongside a patio that os perfect for entertaining guests in the summer sun. The garden is also enclosed by mature hedging and fencing, providing a good degree of privacy and seclusion, and benefits from established trees, plants, and shrubs, along with an entertaining area under a wooden pergola.

Floorplan



3 Ventnor Terrace, Aldershot, GU12

Approximate Area = 1267 sq ft / 117.7 sq m
 Limited Use Area(s) = 19 sq ft / 1.8 sq m
 Total = 1286 sq ft / 119.5 sq m
 For identification only - Not to scale



Floor plan produced in accordance with RICS Property Measurement Standards incorporating International Property Measurement Standards (IPMS2 Residential). © nitchem 2024. Produced for Bridges Estate Agents. REF: 1165041



To arrange a viewing please contact:

Tel: 01252 361550

Email: info@bridges.co.uk

Important Notice - These particulars are set out as a general outline only for the guidance of intended purchasers and do not form part of any offer or contract and must not be relied upon as statements or representations of fact. Purchasers must satisfy themselves by inspection or otherwise as to their correctness.