



Two Bedroom Ground Floor Apartment

Cody Close, Ash Vale, Surrey, GU12 5SJ

Offers in excess of: £199,950

- Two Bedrooms
- Ground Floor Apartment
- Allocated Parking
- Refitted Shower Room
- Walking Distance to Amenities
- Well Presented Throughout
- Peaceful Location
- EPC: C (70)



Description

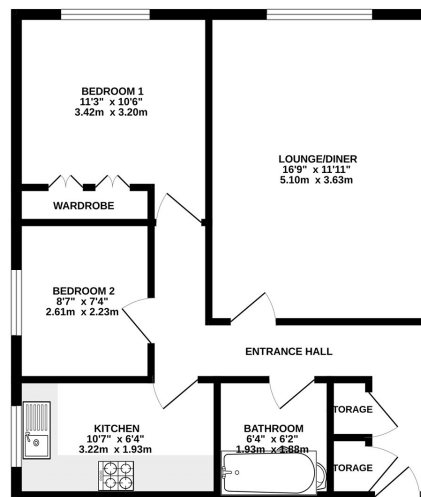
Located within the popular Old Farm Place development is this well presented two-bedroom ground floor flat. The location is within walking distance to the local amenities and also benefits from offering easy access to the A3 and M3. The flat boasts a recently refitted shower room, two bedrooms, a kitchen with plenty of cupboard space and a spacious living room.

Outside

Outside boasts parking and visitors parking, communal grounds and an intercom entrance system.

Floorplan

GROUND FLOOR



While every attempt has been made to ensure the accuracy of the floorplan contained here, measurements of floors, walls, levels and any other items are approximate and no responsibility is taken for any error. Dimensions in this advertisement are for guidance only and should be used as a guide only for the prospective purchaser. The services, systems and appliances shown have not been tested and no guarantee can be given. Made with MetreX 10/2011



To arrange a viewing please contact:

Tel: 01252 361550

Email: info@bridges.co.uk

Important Notice - These particulars are set out as a general outline only for the guidance of intended purchasers and do not form part of any offer or contract and must not be relied upon as statements or representations of fact. Purchasers must satisfy themselves by inspection or otherwise as to their correctness.