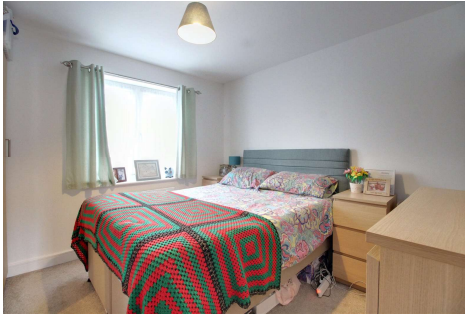


Two Bedroom Apartment

Gurkha Road, Church Crookham, Fleet, Hampshire, GU52 8DR

Price: £285,000

- Two Double Bedrooms
- Apartment
- En Suite
- Allocated Parking
- Crookham Park
- Viewing Advised
- Balcony
- EPC: B (84)



Description

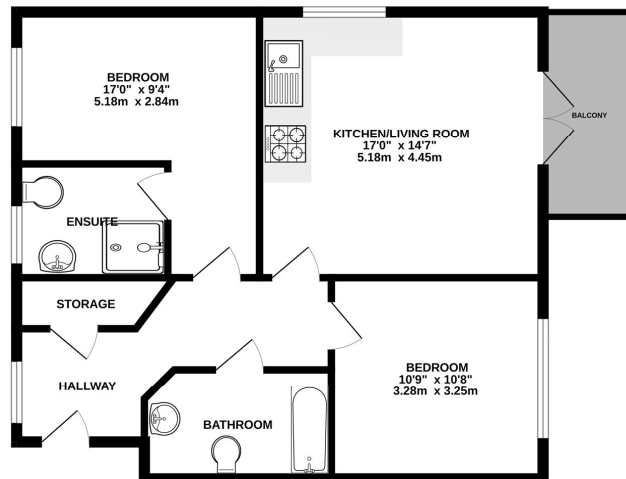
A first floor, two double bedroom apartment, originally constructed by Taylor Wimpey in 2017 and situated within the "Crookham Park" development. The property is within walking distance to the SANGS/nature reserve. The accommodation comprises: entrance hall, an open plan kitchen/living/dining room with french doors to the balcony, a principle bedroom with en-suite shower room, a second double bedroom and a family bathroom. Other features include an intercom entry system and allocated parking for two vehicles. There are 115 years remaining on the current lease. Viewings are highly advised and strictly by appointment only.

Outside

The property benefits from allocated parking for two vehicles as well as use of various visitors space within close proximity. To access the main building there is an intercom entry system that leads into the communal hallway.

Floorplan

FIRST FLOOR



Whilst every attempt has been made to ensure the accuracy of the floorplan contained here, measurements of blocks, windows, doors and any other items are approximate and no responsibility is taken for any errors or omissions in the floorplan. The plan is for illustrative purposes only and should be used as a guide only for any prospective purchaser. The services, systems and appliances shown have not been tested and no guarantee as to their operability or efficiency can be given.
Made with Metron 02024



To arrange a viewing please contact:

Tel: 01252 361550

Email: info@bridges.co.uk

Important Notice - These particulars are set out as a general outline only for the guidance of intended purchasers and do not form part of any offer or contract and must not be relied upon as statements or representations of fact. Purchasers must satisfy themselves by inspection or otherwise as to their correctness.