



## Three Bedroom Semi-Detached House

**Albuhera Road, Wellesley, Aldershot, Hampshire, GU11 4DD**

Guide Price: £500,000

- Three Double Bedrooms
- Three Bathrooms
- Lounge/Diner
- Separate Kitchen
- Downstairs Cloakroom
- Enclosed Rear Garden
- Garage and Parking
- EPC : B (85)



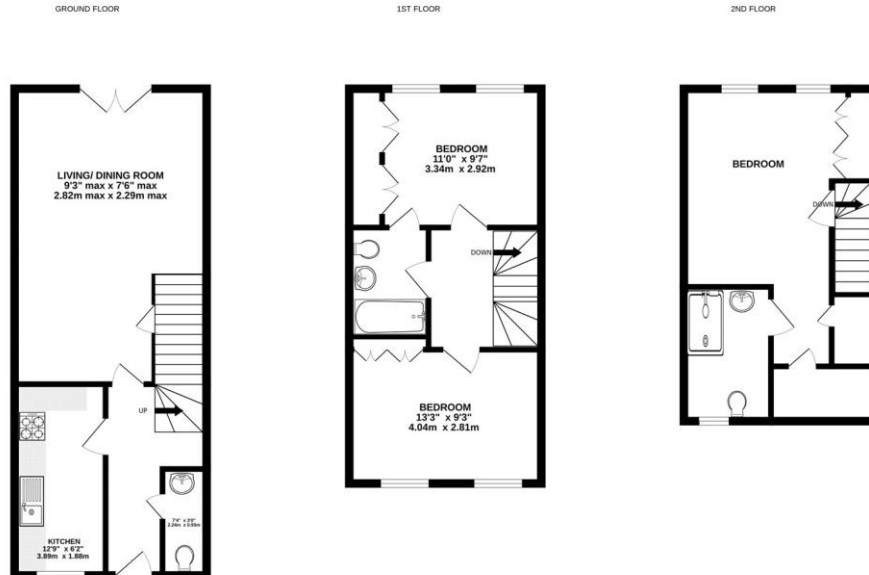
## Description

Situated within the Wellesley development is this three bedroom semi-detached family home, benefitting from a garage and driveway parking. The ground floor accommodation comprises a kitchen to the front with integrated appliances, as well as a spacious lounge/diner to the rear, with access to the garden. There is also a downstairs cloakroom. To the first floor are two double bedrooms with inbuilt storage, in addition to the family bathroom. The second floor comprises an enviable principal bedroom and a further bathroom. Positioned just over half a mile from Aldershot train station, which offers direct links to London Waterloo in under an hour, the property is also within walking distance of popular schools for all ages, in addition to shops and amenities.

## Outside

To the side of the property there is a block paved driveway ahead of the garage. There is a side gate to the rear garden, which can also be accessed from the lounge/diner. The garden itself is mostly laid to lawn, with a patio across the immediate rear.

## Floorplan



Whilst every attempt has been made to ensure the accuracy of the floorplan contained here, measurements of doors, windows, rooms and any other items are approximate and no responsibility is taken for any error, omission or mis-statement. This plan is for illustrative purposes only and should be used as such by any prospective purchaser. The services, systems and appliances shown have not been tested and no guarantee as to their operability or efficiency can be given.  
Made with Metropix 1/2024



To arrange a viewing please contact:

Tel: 01252 361550

Email: [info@bridges.co.uk](mailto:info@bridges.co.uk)

Important Notice - These particulars are set out as a general outline only for the guidance of intended purchasers and do not form part of any offer or contract and must not be relied upon as statements or representations of fact. Purchasers must satisfy themselves by inspection or otherwise as to their correctness.