



Three Bedroom Terraced House

Highview Crescent, Camberley, Surrey, GU15 4BB

Guide Price: £350,000

- Three Generous Bedrooms
- Kitchen and Utility Room
- Backing onto Woodland
- Landscaped Rear Garden
- Refitted Kitchen
- Double Glazed
- Favoured Location
- EPC: D (68)



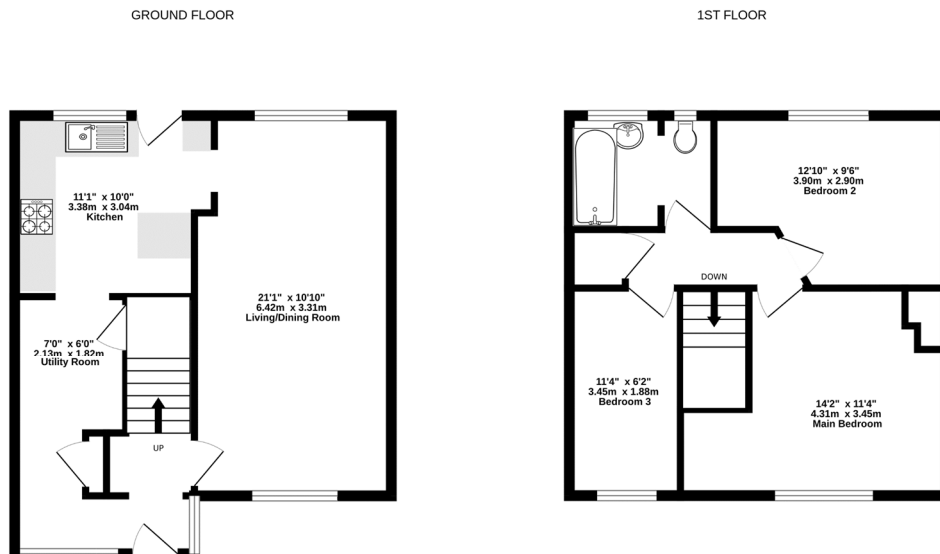
Description

A superbly presented family home benefiting from a secluded location and having been the subject of several improvements by the current owners to include a refitted kitchen and replacement double glazed windows. Positioned close to amenities, excellent primary and secondary schools and backing onto Woodland. Accommodation comprises of an entrance porch, dual aspect living room, kitchen and breakfast to the ground floor. The first floor boasts three generous bedrooms and refitted family bathroom. CHAIN FREE.

Outside

The rear garden has been landscaped with a full width patio leading down to a lawned area and in turn hardstanding to the rear boundary and boasting a private aspect and backing onto woodland and fully enclosed.

Floorplan



Whilst every attempt has been made to ensure the accuracy of the floorplan contained here, measurements of doors, windows, rooms and any other items are approximate and no responsibility is taken for any error, omission or mis-statement. This plan is for illustrative purposes only and should be used as such by any prospective purchaser. The services, systems and appliances shown have not been tested and no guarantee as to their operability or efficiency can be given.
Made with Metropix ©2024



To arrange a viewing please contact:

Tel: 01252 361550

Email: info@bridges.co.uk

Important Notice - These particulars are set out as a general outline only for the guidance of intended purchasers and do not form part of any offer or contract and must not be relied upon as statements or representations of fact. Purchasers must satisfy themselves by inspection or otherwise as to their correctness.