



HEDGER GARDENS | HINDHEAD


**Platinum
Homes**
BY BRIDGES



The Property

Plot 6 is a delightful detached three-story residence boasting 3,006 square feet in total. Upon entering, you are welcomed by a spacious hallway leading to a generously sized living room with a feature fireplace and log burner. Adjacent to the living room is a convenient study, perfect for quiet work or relaxation. The heart of the home resides on the ground floor, with an open-plan kitchen, dining, and family area that opens onto the garden through Bi Fold doors, ideal for entertaining. Fully fitted custom designed shaker style kitchen, Silestone worktops, integrated Miele appliances, and a Caple wine cooler. The utility room provides access to the garage.

Upstairs, the primary bedroom offers a luxurious escape with a dressing area and en suite bathroom. Bedroom two features a fitted wardrobe and its own en suite, with two additional bedrooms offering ample space for family or guests. A family bathroom completes this level for added convenience. To the second floor is bedroom five with a cloakroom and a bonus room.

Outside, double garage with driveway offers ample parking. The garden features lush turf and a welcoming patio area, perfect for outdoor dining and/or relaxation. This home seamlessly blends comfort, functionality, and style, creating a welcoming retreat.

The interiors boast contemporary design features and functions, versatile spacious layouts, underfloor heating to the ground floor, integrated premium appliances, and luxurious bathrooms. The home also benefits from energy-efficient Air Source Heat pumps and Solar Panels, enhancing its green credentials.

Hedger Garden homes feature an exemplary, luxurious specification and finish, reflecting Natta Homes commitment to quality. Trusted brands, skilled craftsmen, and meticulous attention to detail ensure that your home is not only beautifully crafted but will also perform impeccably for generations to come.



Features

- Gated Development of Six Houses
- Five Bedroom Detached House
- Fully fitted, custom designed Shaker Kitchen
- Feature Fireplace with surround, Log Burner
- Study
- Luxurious Principal Bedroom Suite
- Underfloor heating to Ground Floor
- Full Alarm System
- Double Garage

Contact

Philip Gascoyne

pgascoyne@platinumbybridges.co.uk

01252 975501


**Platinum
Homes**
BY BRIDGES



Tower Road, Hindhead, GU26

Approximate Area = 2968 sq ft / 275.7 sq m (includes garage & excludes voids)

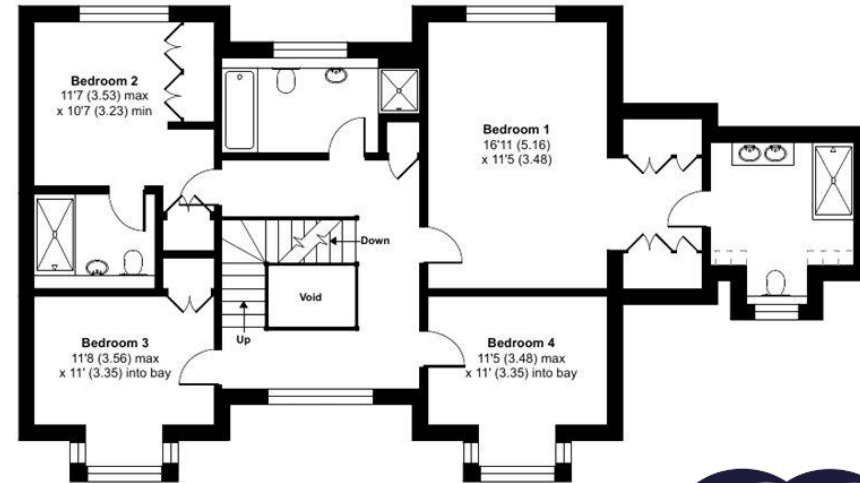
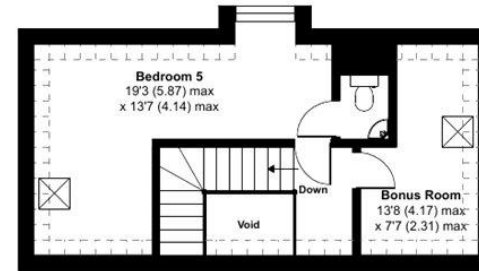
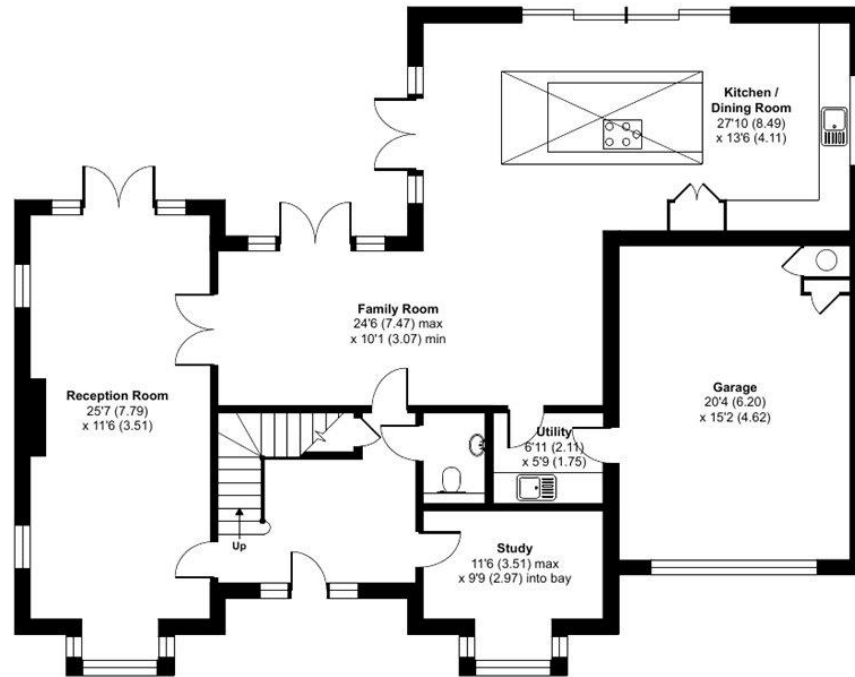
Limited Use Area(s) = 73 sq ft / 6.7 sq m

Total = 3041 sq ft / 282.5 sq m

For identification only - Not to scale



Denotes restricted head height



Floor plan produced in accordance with RICS Property Measurement Standards incorporating International Property Measurement Standards (IPMS2 Residential). © n4chem 2024. Produced for Bridges Estate Agents Ltd (Platinum Homes). REF: 1088477



