

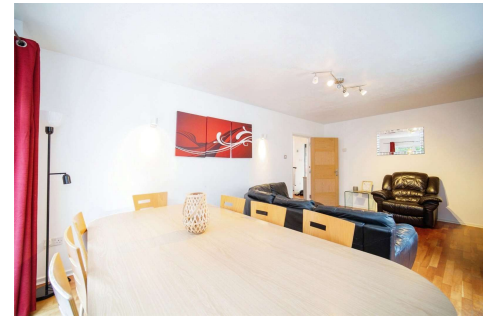


## Six Bedroom Detached House

**Northcott, Bracknell, Bracknell Forest, RG12 7WR**

Offers in excess of: £600,000

- Six Bedrooms
- No Onward Chain
- 20ft x 12'6 Living Room
- Modern Fitted Kitchen with Separate Utility Room
- Downstairs Cloakroom
- Office
- Modern Bathroom
- EPC: D (60)



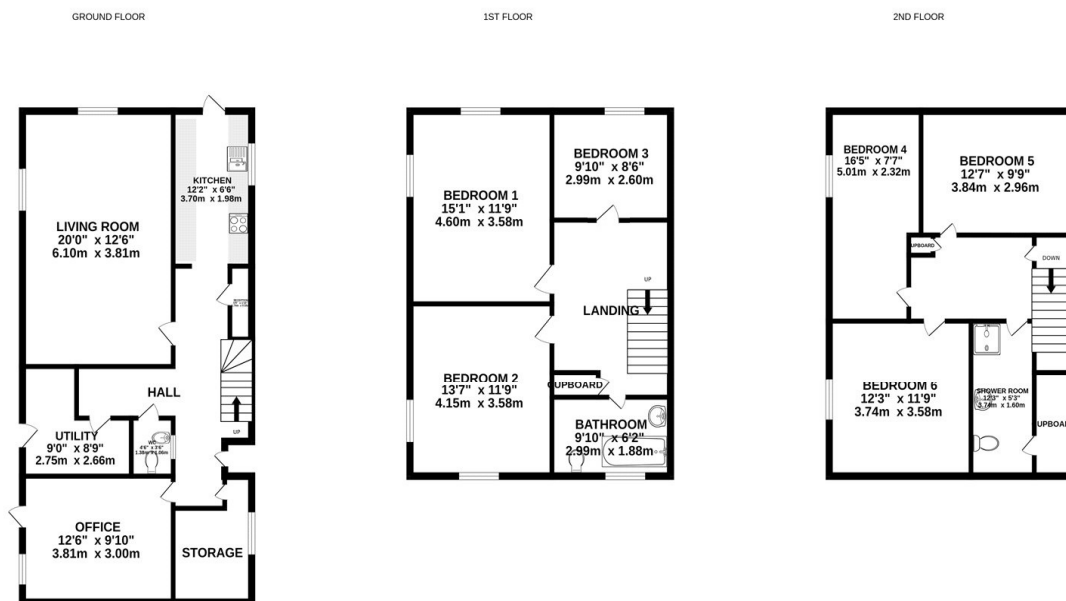
## Description

A well-presented spacious family home with accommodation split over three floors. Located in a popular residential cul-de-sac location. This property offers: six bedrooms, living room, home office, modern kitchen, separate utility room, modern bathroom and a separate ensuite shower room off the master bedroom. Outside there is an enclosed rear garden mainly laid to lawn along with off road parking for two vehicles to the front with access to garage.

## Outside

Outside, a driveway offering parking for two vehicles with gated access at the side leading to the rear garden. Mainly laid to lawn with paved patio area providing a relaxing private outside space.

## Floorplan



Whilst every attempt has been made to ensure the accuracy of the floorplan contained here, measurements of doors, windows, rooms and any other items are approximate and no responsibility is taken for any error, omission or mis-statement. This plan is for illustrative purposes only and should be used as such by any prospective purchaser. The services, systems and appliances shown have not been tested and no guarantee as to their operability or efficiency can be given.  
Made with Metrovox ©2024



To arrange a viewing please contact:

Tel: 01256 880001

Email: [info@bridges.co.uk](mailto:info@bridges.co.uk)

Important Notice - These particulars are set out as a general outline only for the guidance of intended purchasers and do not form part of any offer or contract and must not be relied upon as statements or representations of fact. Purchasers must satisfy themselves by inspection or otherwise as to their correctness.