



## Two Bedroom Ground Floor Apartment

**Grace Gardens, Crookham Road, Fleet, Hampshire, GU51 5TB**

Price: £270,000

- Two Bedroom
- Apartment
- Ground Floor
- Allocated Parking
- Two Bathrooms
- Juliette Balcony
- Modern Throughout
- EPC: C (78)



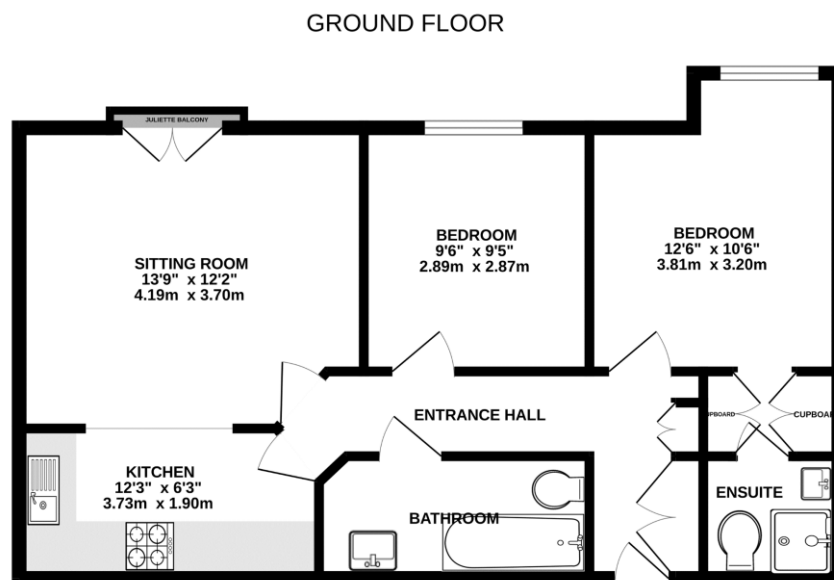
## Description

Offered to the market in fantastic order throughout, is this ground floor apartment. Only a stone's throw from Fleet town centre and offering allocated parking, this property is an ideal location. The current owners have tastefully modernised throughout, and opened the kitchen and living room, to make a spacious, bright and airy space. The accommodation comprises of, open plan, kitchen, dining, living room; Two double bedrooms, with en suite to bedroom one, and family bathroom. The property also has ample storage space, with built in wardrobes and storage cupboards.

## Outside

Grace Gardens, has the benefit of allocated and visitors parking, there is an entry phone buzzer system, and spacious communal gardens laid to lawn. The apartment itself, has a Juliette balcony, overlooking greenery.

## Floorplan



Whilst every attempt has been made to ensure the accuracy of the floorplan contained here, measurements of doors, windows, rooms and any other items are approximate and no responsibility is taken for any error, omission or mis-statement. This plan is for illustrative purposes only and should be used as such by any prospective purchaser. The services, systems and appliances shown have not been tested and no guarantee as to their operability or efficiency can be given.  
Made with Metropix ©2024



To arrange a viewing please contact:

Tel: 01252 361550

Email: [info@bridges.co.uk](mailto:info@bridges.co.uk)

Important Notice - These particulars are set out as a general outline only for the guidance of intended purchasers and do not form part of any offer or contract and must not be relied upon as statements or representations of fact. Purchasers must satisfy themselves by inspection or otherwise as to their correctness.