

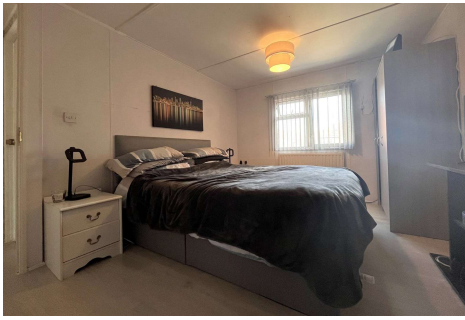


Two Bedroom Detached Mobile Home

Pine Park, Aldershot Road, Normandy, Surrey, GU3 3HU

Price: £140,000

- Two Double Bedrooms
- Mobile Home
- Close to Guildford
- Quiet Area
- Small Development
- Parking
- Double Glazed
- EPC: TBC



Description

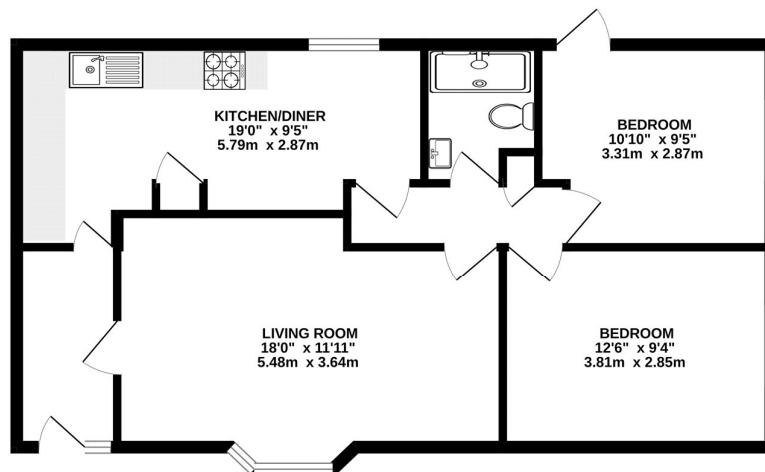
This lovely two bedroom park home is offered to the market in very good condition throughout and is pleasantly situated on the quiet and exclusive Pine Park development in Normandy. The property is situated in a very desirable location in Normandy close to Guildford and Ash, with plenty of lovely walks available right at the front door. This great home has its own private wrap around garden providing a patio, space for storage sheds, and a low maintenance garden. Residents' and visitor parking is available, the park is for over 55's and available to cash buyers only. Please call us today to book your viewing!

Outside

The property has parking and a wraparound garden in a quiet spot in the development.

Floorplan

GROUND FLOOR



Whilst every attempt has been made to ensure the accuracy of the floorplan contained here, measurements of doors, windows, rooms and any other items are approximate and no responsibility is taken for any error, omission or mis-statement. This plan is for illustrative purposes only and should be used as such by any prospective purchaser. The services, systems and appliances shown have not been tested and no guarantee as to their operability or efficiency can be given.
Made with Metropix 12/2021



To arrange a viewing please contact:

Tel: 01252 361550

Email: info@bridges.co.uk

Important Notice - These particulars are set out as a general outline only for the guidance of intended purchasers and do not form part of any offer or contract and must not be relied upon as statements or representations of fact. Purchasers must satisfy themselves by inspection or otherwise as to their correctness.