



## Two Bedroom Maisonette

**Wildfield Close, Wood Street Village, Guildford, Surrey, GU3 3EQ**

Price: £235,000

- Shared Garden
- Low Charges
- Quiet Cul-de-Sac Setting
- Two Double Bedrooms
- Spacious Living Room
- Lease being renewed to 175 years on completion
- Residents Parking
- EPC: C (78)



## Description

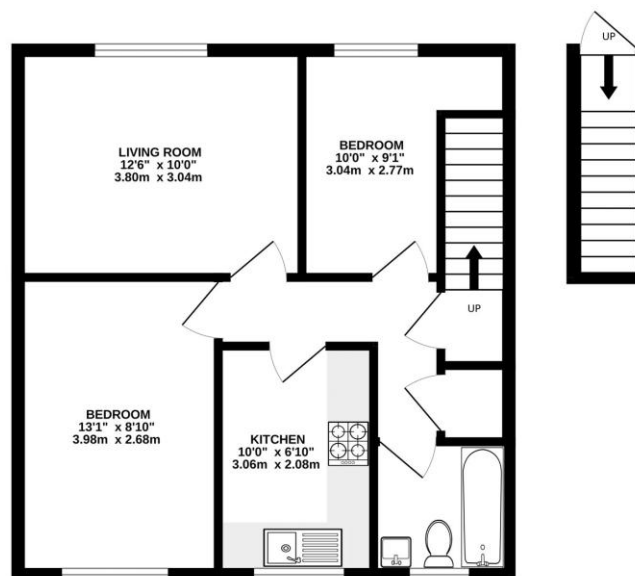
**\*\*NO CHAIN\*\*** Located within the corner of a quiet cul-de-sac in the sought after Wood Street village, is this spacious and well-presented first floor maisonette. The property boasts its own private entrance where you will find stairs leading up to the accommodation. The property features a generous size living room, kitchen with plenty of cupboard and work-top space and a breakfast bar. There are also two double bedrooms and the bathroom suite. Further benefits includes a beautiful shared south-facing garden, low service and ground rent charges and is also offered to the market with no onward chain.

## Outside

Outside boasts a beautiful, shared garden, external storage cupboard and residents parking.

## Floorplan

1ST FLOOR



Whilst every attempt has been made to ensure the accuracy of the floorplan contained here, measurements of floors, walls, doors and any other items are approximate and no responsibility is taken for any error, omission or misstatement. This plan is for illustrative purposes only and should be used as such by any prospective purchaser. The services, systems and appliances shown have not been tested and no guarantee as to their operability or efficiency can be given.  
Made with Metropack 12/2014



**TO ARRANGE A VIEWING PLEASE CONTACT:**  
Tel: **01252 361550** or Email: **info@bridges.co.uk**



**Important Notice** - These particulars are set out as a general outline only for the guidance of intended purchasers/tenants and do not form part of any offer or contract and must not be relied upon as statements or representations of fact. Purchasers/Tenants must satisfy themselves by inspection or otherwise as to their correctness.