



Two Bedroom Maisonette

Wildfield Close, Wood Street Village, Guildford, Surrey, GU3 3EQ

Price: £240,000

- Shared Garden
- Low Charges
- Quiet Cul-de-Sac Setting
- Two Double Bedrooms
- Spacious Living Room
- Well Presented Throughout
- Residents Parking
- EPC: C (78)



Description

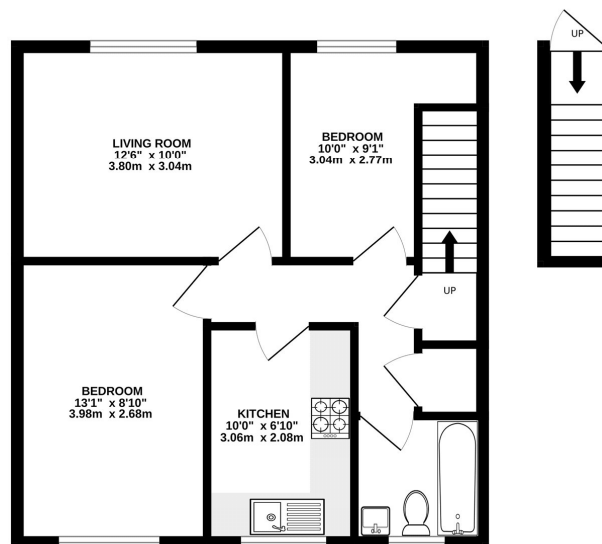
****NO CHAIN**** Located within the corner of a quiet cul-de-sac in the sought after Wood Street village, is this spacious and well-presented first floor maisonette. The property boasts its own private entrance where you will find stairs leading up to the accommodation. The property features a generous size living room, kitchen with plenty of cupboard and work-top space and a breakfast bar. There are also two double bedrooms and the bathroom suite. Further benefits includes a beautiful shared south-facing garden, low service and ground rent charges and is also offered to the market with no onward chain.

Outside

Outside boasts a beautiful, shared garden, external storage cupboard and residents parking.

Floorplan

1ST FLOOR



While every attempt has been made to ensure the accuracy of the figures contained here, measurements of doors, windows, stairs, and any other items are approximate and no responsibility is taken for any error or omission in the statement. The purchaser is advised to verify the accuracy of the figures and to satisfy themselves as to the accuracy of the measurements. The services, systems and appliances shown have not been tested and no guarantee is given as to their operability or efficiency. ©2024 Made with Mentimeter



To arrange a viewing please contact:

Tel: 01252 361550

Email: info@bridges.co.uk

Important Notice - These particulars are set out as a general outline only for the guidance of intended purchasers and do not form part of any offer or contract and must not be relied upon as statements or representations of fact. Purchasers must satisfy themselves by inspection or otherwise as to their correctness.