



One Bedroom Ground Floor Apartment

Bethel Lane, Farnham, Surrey, GU9 0QF

Price: £204,950

- One Double Bedroom
- Ground Floor
- Well Presented
- Desirable Location
- Walking Distance to Farnham Park
- Allocated Parking
- Generous Lease
- EPC: C (74)



Description

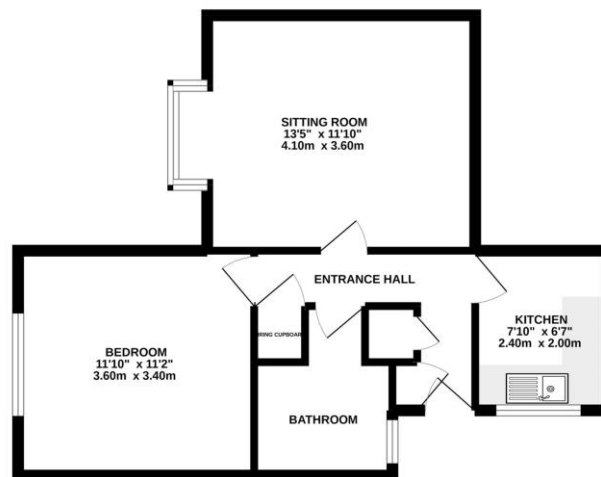
Offered to the market is this well presented ground floor apartment, situated in North Farnham on the peaceful and desirable road of Bethel Lane. The key benefits include one double bedroom, a smartly presented kitchen, a spacious living/dining room suitable for those who love to entertain guests, a three-piece bathroom suite, electric storage heaters and double-glazed windows.

Outside

You are conveniently positioned within walking distance to untouched countryside, such as Farnham Park and Ceasar Camp. You benefit from having an allocated parking space. Ideal for first time or investment buyer.

Floorplan

GROUND FLOOR



Whilst every effort has been made to ensure the accuracy of the foregoing particulars, measurements of floor, ceiling, rooms and any other parts, the advertiser and its agents accept no responsibility for any error, omission or mis-statement. This plan is for guidance only and should be used as a guide only for prospective purchasers. The services, systems and appliances shown have not been tested and no guarantee is given in their operation or efficiency save the goods.
Made with Lettigo 02022



To arrange a viewing please contact:

Tel: 01252 361550

Email: info@bridges.co.uk

Important Notice - These particulars are set out as a general outline only for the guidance of intended purchasers and do not form part of any offer or contract and must not be relied upon as statements or representations of fact. Purchasers must satisfy themselves by inspection or otherwise as to their correctness.