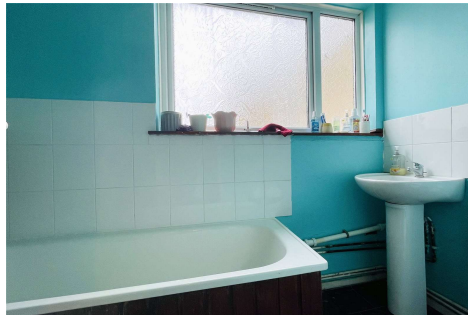
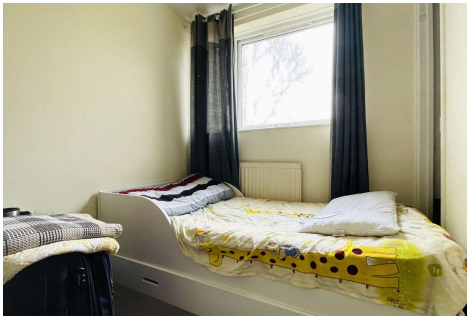


Three Bedroom Terraced House

Holywell Close, Farnborough, Hampshire, GU14 8TT

Guide Price: £270,000

- Three Bedrooms
- Downstairs Cloakroom
- Family Bathroom
- Enclosed Garden
- Well Located for Good Schools
- Close to the Mainline Station
- No Onward Chain
- EPC : D (66)



Description

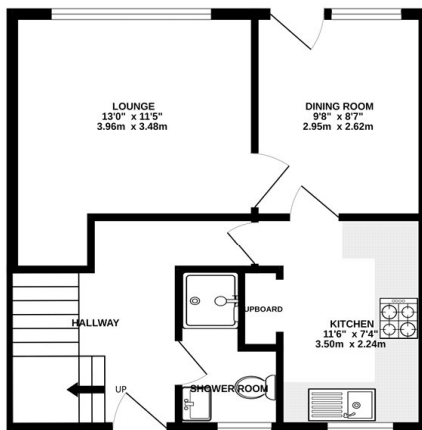
Available for immediate viewings and offering great investment potential is this genius home in a popular estate. Viewings are highly recommended to appreciate what the property has to offer. Please contact a member of the team to arrange viewings at your earliest opportunity.

Outside

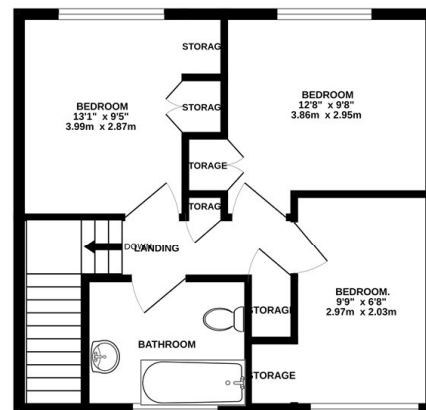
The home is overlooking a green area to the front and benefits from a courtyard style setting. To the rear, there is an enclosed garden of which presents ample patio space with border plantings, as well as gated rear access.

Floorplan

GROUND FLOOR



1ST FLOOR



Whilst every attempt has been made to ensure the accuracy of the floorplan contained here, measurements of doors, windows, rooms and any other items are approximate and no responsibility is taken for any error, omission or mis-statement. This plan is for illustrative purposes only and should be used as such by any prospective purchaser. The services, systems and appliances shown have not been tested and no guarantee as to their operability or efficiency can be given.
Made with Metropix ©2024



To arrange a viewing please contact:

Tel: 01252 361550

Email: info@bridges.co.uk

Important Notice - These particulars are set out as a general outline only for the guidance of intended purchasers and do not form part of any offer or contract and must not be relied upon as statements or representations of fact. Purchasers must satisfy themselves by inspection or otherwise as to their correctness.