

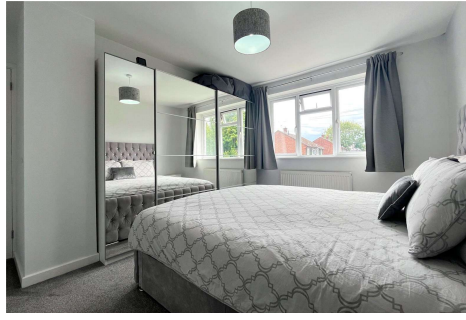
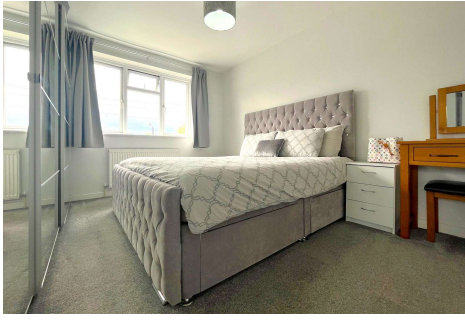


Three Bedroom End of Terrace House

Fairview Road, Ash, Surrey, GU12 6AQ

Offers in excess of: £425,000

- Well Presented Throughout
- Refitted Bathroom
- Refitted Kitchen/Diner
- Driveway for Multiple Vehicles
- Cloakroom
- Generous Plot with Scope to Extend STPP
- Large Private Garden
- EPC: D (59)



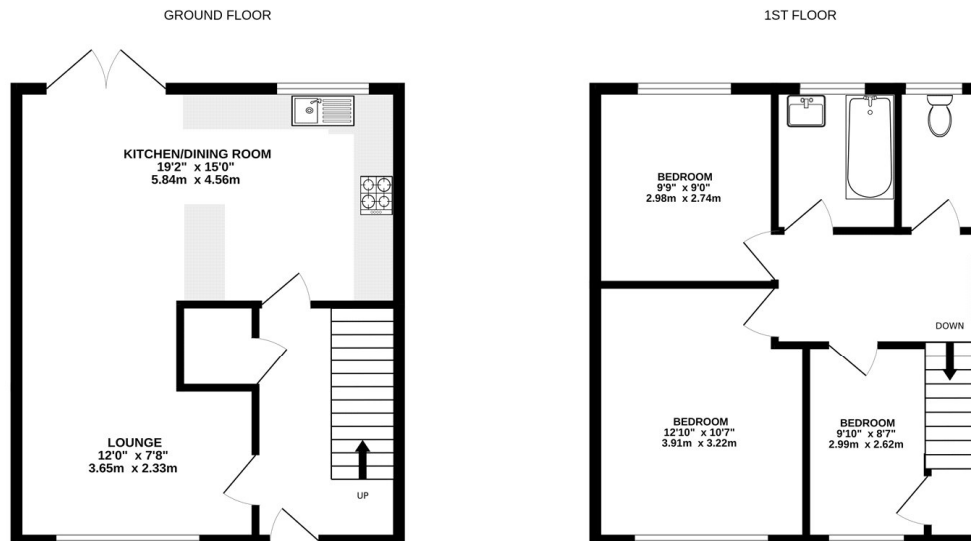
Description

Located within a popular area of Ash village, and within close walking distance to the rail station and local amenities, is this spacious, light and airy three-bedroom end-of-terrace home. The property boasts a refitted kitchen/diner with double doors leading into the garden. You will also find a generous size living room and a cloakroom. Upstairs benefits from three good-size bedrooms and a refitted family bathroom suite.

Outside

Outside boasts a generous size plot, with scope to extend subject to planning. There is also a private rear garden, driveway parking for multiple vehicles and side access.

Floorplan



Whilst every attempt has been made to ensure the accuracy of the floorplan contained here, measurements of doors, windows, rooms and any other items are approximate and no responsibility is taken for any error, omission or mis-statement. This plan is for illustrative purposes only and should be used as such by any prospective purchaser. The services, systems and appliances shown have not been tested and no guarantee as to their operability or efficiency can be given.
Made with Metropix ©2024



To arrange a viewing please contact:

Tel: 01252 361550

Email: info@bridges.co.uk

Important Notice - These particulars are set out as a general outline only for the guidance of intended purchasers and do not form part of any offer or contract and must not be relied upon as statements or representations of fact. Purchasers must satisfy themselves by inspection or otherwise as to their correctness.