



## Two Bedroom Apartment

**Barrosa Road, Wellesley, Aldershot, Hampshire, GU11 4DS**

Price: £240,000

- Two Double Bedrooms
- Fully Integrated Kitchen
- First Floor Apartment
- Close to Woodland Walks
- En-Suite Shower Room
- Allocated Parking
- Approximate Rental Price- £1,450PCM
- EPC : B (82)



## Description

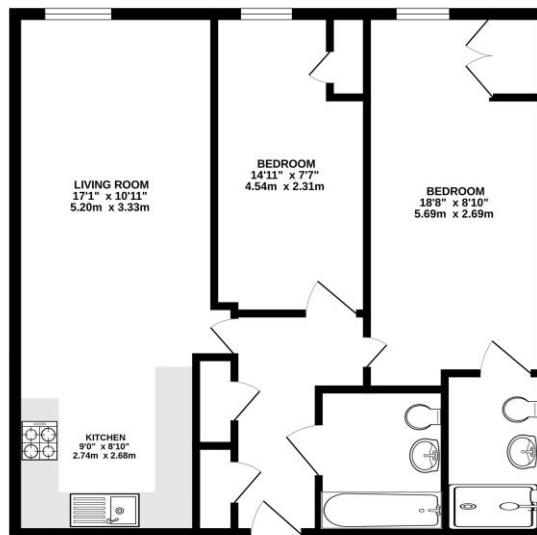
Situated in a vibrant development ' Wellesley ' is this first floor apartment offered to the market with the added benefit of two allocated parking spaces. This is an apartment that hasn't been offered for sale since the building was constructed and due to its position could be easily seen as one of the most desirable locations on the whole of the Wellesley Development. Accommodation comprises of a well sized living room/kitchen with integrated appliances, two double bedrooms, along with numerous storage/utility cupboards. There are nearby woodland walks and a viewing area with far reaching views over Aldershot and beyond.

## Outside

The property is overlooking woodlands, with picturesque walks at Caesar camp, and rowhill nature reserve. The property has two allocated parking spaces.

## Floorplan

GROUND FLOOR



While every attempt has been made to ensure the accuracy of the floorplan contained here, measurements of floors, sections, rooms and any other items are approximate and no responsibility is taken for any errors, omissions or mis-statements. This plan is for illustrative purposes only and should be used as such for any prospective purchaser. The services, fixtures and appliances shown here are not tested and no guarantee as to their operability or efficiency can be given.  
Made with AutoCAD 2020



To arrange a viewing please contact:

Tel: 01252 361550

Email: [info@bridges.co.uk](mailto:info@bridges.co.uk)

Important Notice - These particulars are set out as a general outline only for the guidance of intended purchasers and do not form part of any offer or contract and must not be relied upon as statements or representations of fact. Purchasers must satisfy themselves by inspection or otherwise as to their correctness.