

One Bedroom Apartment

Kingfisher Walk, Ash, Surrey, GU12 6RF

Price: £190,000

- Ground Floor Apartment
- Good Sized Living/Dining Room
- Large Bedroom
- En Suite Bathroom
- Over 900 Year Lease
- Well Managed Block
- Allocated Parking
- EPC: C (71)



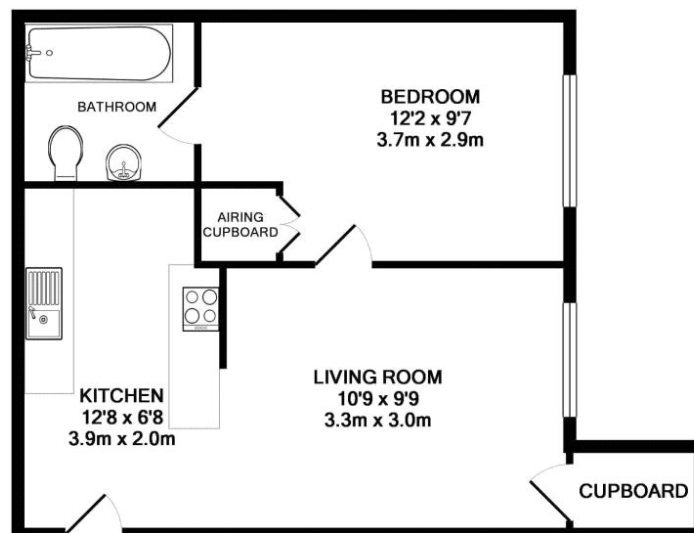
Description

This lovely one double bedroom first floor apartment is located in the heart of Ash Village. It was built by renowned local builders, Charles Church to their Richmond design - with a super open plan living space perfect for entertaining and a modern ensuite bathroom. Being in a well-managed block, which is close to the picturesque Willow Park Lake, the property would be an ideal first time buy or an excellent investment purchase. Situated within easy reach of key amenities, there is also good transport links with the A331 and a train station nearby, giving fast access to London. The property benefits from allocated parking.

Outside

There is a block paved car parking area, leading to communal grounds which are mainly laid to lawn.

Floorplan



Whilst every attempt has been made to ensure the accuracy of the floor plan contained here, measurements of doors, windows, rooms and any other items are approximate and no responsibility is taken for any error, omission, or mis-statement. This plan is for illustrative purposes only and should be used as such by any prospective purchaser. The services, systems and appliances shown have not been tested and no guarantee as to their operability or efficiency can be given
Made with Metropix ©2019



To arrange a viewing please contact:

Tel: 01252 361550

Email: info@bridges.co.uk

Important Notice - These particulars are set out as a general outline only for the guidance of intended purchasers and do not form part of any offer or contract and must not be relied upon as statements or representations of fact. Purchasers must satisfy themselves by inspection or otherwise as to their correctness.