

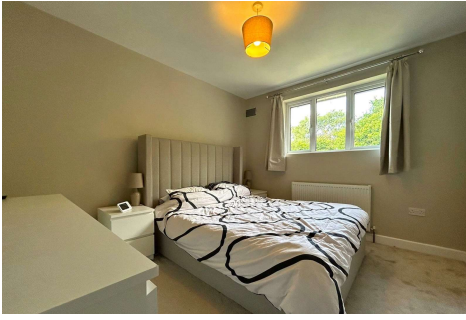


Two Bedroom Maisonette

May Crescent, Ash, Surrey, GU12 6PS

Offers in excess of: £240,000

- Renovated Throughout
- Two Double Bedrooms
- Private Garden
- Refitted Kitchen
- Refitted Bathroom
- Terrace off Kitchen
- Walking Distance to Amenities
- EPC: D (60)



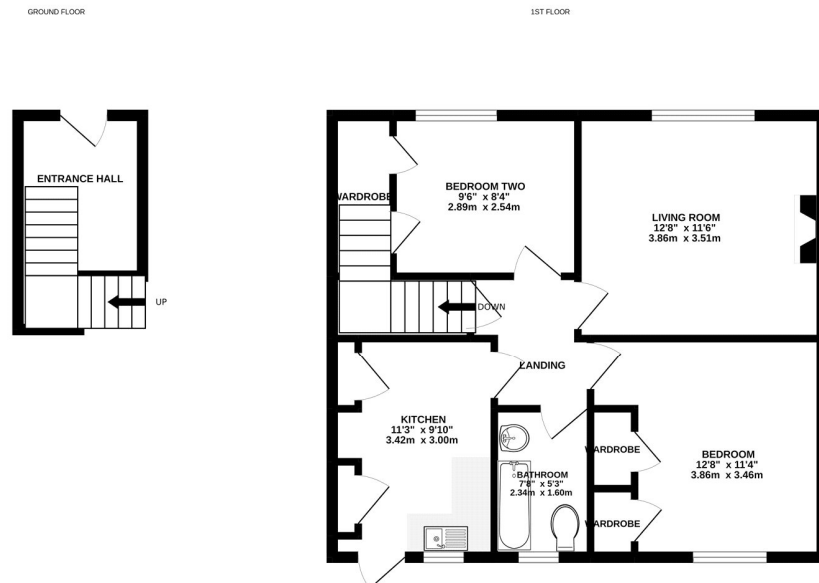
Description

Set within a quiet residential area of the Ash Village is this immaculate two-bedroom maisonette. The property boasts two good size double bedrooms, both with built-in wardrobe space - as well as a refitted kitchen, with access out onto the terrace and garden. Further accommodation includes a refitted bathroom suite, a spacious living room with feature fireplace and built-in storage. You will also find an entrance hall area which provides plenty of storage for coats and shoes.

Outside

Outside boasts a well-presented private garden, a terrace area and on street parking.

Floorplan



Whilst every attempt has been made to ensure the accuracy of the floorplan contained here, measurements of doors, windows, rooms and any other items are approximate and no responsibility is taken for any error, omission or mis-statement. This plan is for illustrative purposes only and should be used as such by any prospective purchaser. The services, systems and appliances shown have not been tested and no guarantee as to their operability or efficiency can be given.
Made with Metriplex ©2022



To arrange a viewing please contact:

Tel: 01252 361550

Email: info@bridges.co.uk

Important Notice - These particulars are set out as a general outline only for the guidance of intended purchasers and do not form part of any offer or contract and must not be relied upon as statements or representations of fact. Purchasers must satisfy themselves by inspection or otherwise as to their correctness.