



Three Bedroom Detached House Guildford Road, Ash, Surrey, GU12 6BT

Price: £490,000

- Three Bedrooms
- Spacious Kitchen/Diner
- Utility Room
- Study Room
- En Suite Bathroom
- Garage with Charging Point
- No Onward Chain
- EPC: B (83)



Description

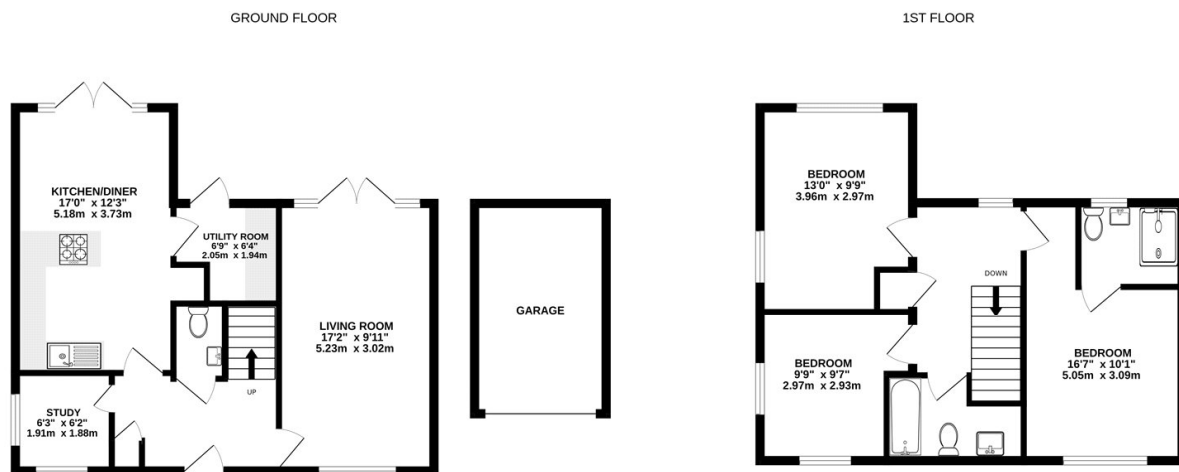
Located within walking distance of Ash's main train station and the local amenities is this three double bedroom detached home. This stunning 'fuller design' Bellway property still has eight years left of its new homes warranty remaining, and has been kept in pristine condition by its current owners.

Downstairs boasts a spacious kitchen/diner with double doors leading out into the garden, a utility room, a study, a cloakroom, and a generous size living room also with doors leading out into the garden. Upstairs benefits from three good sized double bedrooms, an en suite to bedroom one, and a family bathroom suite.

Outside

Outside benefits from a private south facing rear garden, parking, a garage with an electrical car charging point, lighting and electrical sockets.

Floorplan



Whilst every attempt has been made to ensure the accuracy of the floorplan contained here, measurements of doors, windows, rooms and any other items are approximate and no responsibility is taken for any error, omission or mis-statement. This plan is for illustrative purposes only and should be used as such by any prospective purchaser. The services, systems and appliances shown have not been tested and no guarantee as to their operability or efficiency can be given.
Made with Metropix ©2024



To arrange a viewing please contact:

Tel: 01252 361550

Email: info@bridges.co.uk

Important Notice - These particulars are set out as a general outline only for the guidance of intended purchasers and do not form part of any offer or contract and must not be relied upon as statements or representations of fact. Purchasers must satisfy themselves by inspection or otherwise as to their correctness.