



Three Bedroom Terraced Town House

Montgomery Avenue, Wellesley, Aldershot, Hampshire, GU11 4DG

Guide Price: £450,000

- Three/Four Double Bedrooms
- Wooden Shutters Throughout
- Allocated Parking and a Garage
- Immaculately Presented Throughout
- Open Plan Kitchen/Family Room
- Must be Seen to be Appreciated
- No Onward Chain Complications
- EPC : B (86)



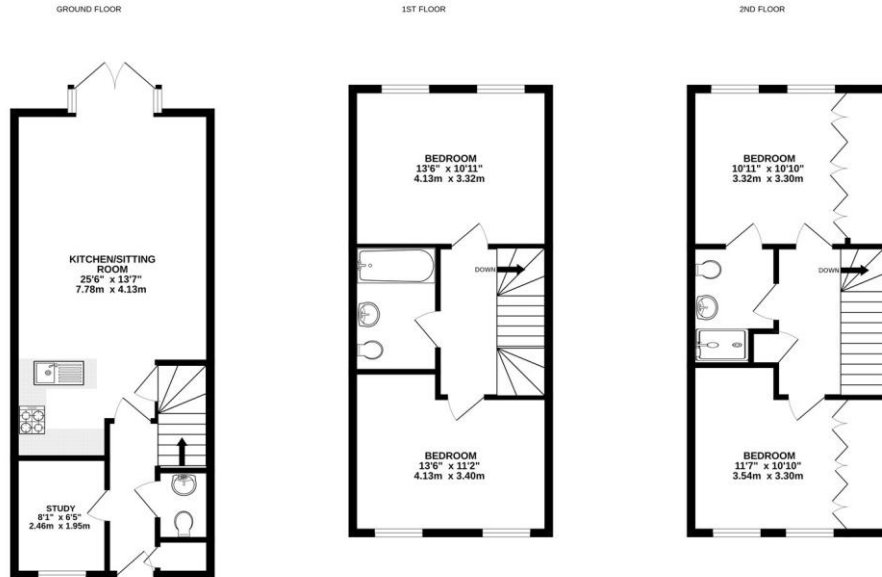
Description

Positioned in the ever popular Wellesley Conservation Area is this magnificent town house. The location of this home means you are not just a short distance from relaxing walking routes and popular schools but also Aldershot train station which provides direct links to London Waterloo. Set over three floors, and with internal accommodation presented in exceptional order throughout, the property benefits from three bedrooms, two generously sized reception rooms with French doors, a further study, as well as a garage. As well as these benefits, the home is still under its NHBC guarantee. The ground floor boasts a welcoming entrance hall which leads to a high gloss fitted kitchen/family room, a study, and a downstairs cloakroom. The first floor offers a generous lounge and double bedroom, as well as a premium family bathroom suite. To the second floor is two further bedrooms, one with bespoke fitted wardrobes and a premium Jack and Jill family bathroom suite. This home has a secluded, established garden to the rear as well as allocated parking and a garage.

Outside

Situated on a generously sized plot, this home benefits from allocated parking to the side and a garage. The property benefits from an attractive and recently landscaped, secluded rear garden incorporating an area of laid artificial lawn and a patio area which is perfect for entertaining. The garden is enclosed by wooden fencing.

Floorplan



Whilst every attempt has been made to ensure the accuracy of the floorplan contained here, measurements of doors, windows, rooms and any other items are approximate and no responsibility is taken for any error, omission or mis-statement. This plan is for illustrative purposes only and should be used as such by any prospective purchaser. The services, systems and appliances shown have not been tested and no guarantee as to their operability or efficiency can be given.
Made with Metrepx ©2024



To arrange a viewing please contact:

Tel: 01252 361550

Email: info@bridges.co.uk

Important Notice - These particulars are set out as a general outline only for the guidance of intended purchasers and do not form part of any offer or contract and must not be relied upon as statements or representations of fact. Purchasers must satisfy themselves by inspection or otherwise as to their correctness.