



Three Bedroom Detached Bungalow

Wanborough, Guildford, Surrey, GU3 2JR

Guide Price: £650,000

- Three Double Bedrooms
- Detached Bungalow
- South Facing Plot
- Semi Rural Location
- Potential to Extend Subject to Consents
- Outbuildings/Annexe and Garage
- No Onward Chain
- EPC: D (66)



Description

Being sold with no onward chain - A very rare opportunity to acquire a three double bedroom bungalow set on a generous south facing plot and nestled in a secluded spot in the semi-rural hamlet of Wanborough. This incredible home has a kitchen/diner and a spacious living/dining room and modern bathroom. Boasting a wraparound plot which offers great scope for extension/improvement subject to the usual consents. The plot already boasts various outbuilding which includes a one-bedroom annexe and a useful garage. There are also sheds and a storeroom. Being surrounded by open fields and green spaces, if you are looking for the quiet life then this one is for you! The village of Wanborough lies just to the north of the Hog's Back near to the large town of Guildford which is a very short drive away. Boasting its own train station and very sought after local schools, call us today to come and take a look!

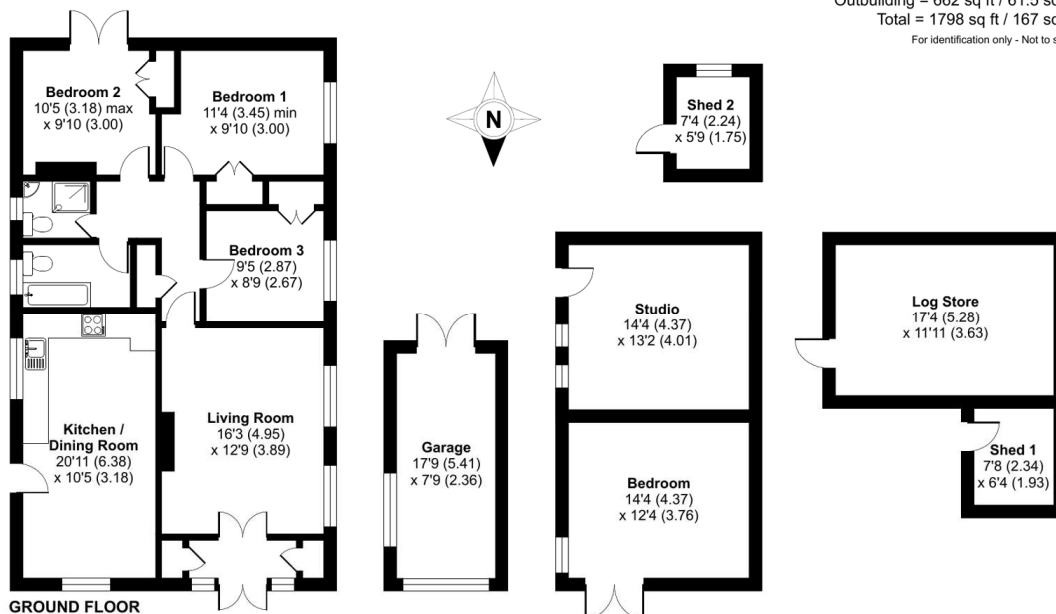
Outside

Set behind mature and very well-maintained hedging which provides a wonderful feeling of seclusion and privacy, this smashing plot is generous in size and being South facing, enjoys lots of smashing natural sunlight. With a spacious block paved driveway which offers parking for numerous vehicles. There is a smart section of lawn and a wraparound walkway/patio section which offers lots of options for outside entertaining. To the side of the bungalow is the useful garage, to the rear is the generous outbuilding/annexe. There is also various sheds and stores dotted across the plot. There is serious potential for extension/improvement subject to the usual consents.

Floorplan

Meadow View Wanborough, Guildford, Surrey, GU3

Approximate Area = 1136 sq ft / 105.5 sq m (includes garage)
 Outbuilding = 662 sq ft / 61.5 sq m
 Total = 1798 sq ft / 167 sq m
 For identification only - Not to scale



Floor plan produced in accordance with RICS Property Measurement Standards incorporating International Property Measurement Standards (IPMS2 Residential). © nichecom 2023. Produced for Bridges Estate Agents. REF: 1031091



TO ARRANGE A VIEWING PLEASE CONTACT:
 Tel: **01252 361550** or Email: **info@bridges.co.uk**



Important Notice - These particulars are set out as a general outline only for the guidance of intended purchasers/tenants and do not form part of any offer or contract and must not be relied upon as statements or representations of fact. Purchasers/Tenants must satisfy themselves by inspection or otherwise as to their correctness.