



One Bedroom Apartment

Sopwith Drive, Farnborough, Hampshire, GU14 6GP

Guide Price: £200,000

- One Double Bedroom
- Ground Floor Apartment
- Lounge/Diner
- Juliet Balcony
- Allocated and Visitor Parking
- Communal Gardens
- Popular Queensgate Development
- EPC : B (84)



Description

Viewings are highly recommended on this beautifully presented ground floor one bedroom apartment. Rochford House is within easy reach of Farnborough town centre and mainline train station.

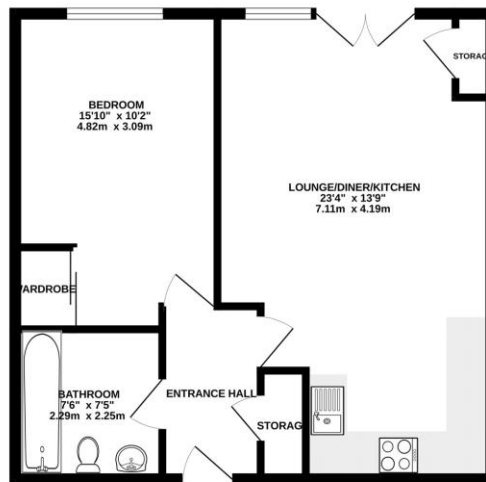
The accommodation comprises of an entrance hall, 23' lounge/diner with a Juliet balcony leading to fitted kitchen, 15' double bedroom with built in wardrobe space and a three piece white fully fitted bathroom suite with a heated towel rail. Further benefits include uPVC double glazing, allocated and visitors parking and well kept communal grounds.

Outside

Externally there is allocated and visitors parking as well as well kept communal gardens.

Floorplan

GROUND FLOOR



While every attempt has been made to ensure the accuracy of the floorplan contained herein, measurements of floors, windows, doors and any other items are approximate and are not intended to be used for any purpose other than a general guide. The floorplan is for information only and should not be used as a basis for any purchase or other transaction. The floorplan is for information only and should not be used as a basis for any purchase or other transaction. Made with AutoCAD 2012



To arrange a viewing please contact:

Tel: 01252 361550

Email: info@bridges.co.uk

Important Notice - These particulars are set out as a general outline only for the guidance of intended purchasers and do not form part of any offer or contract and must not be relied upon as statements or representations of fact. Purchasers must satisfy themselves by inspection or otherwise as to their correctness.