

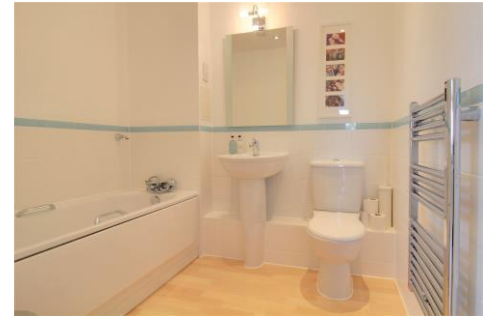
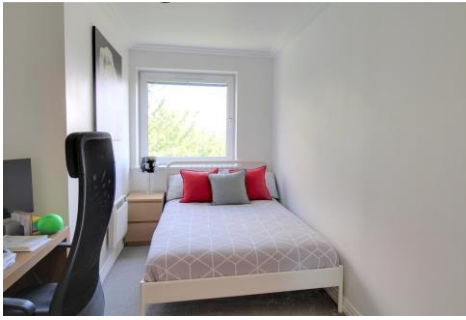


## Two Bedroom Apartment

**Winterthur Way, Basingstoke, Hampshire, RG21 7UN**

Price: £210,000

- Two Bedrooms
- Second Floor Apartment
- Wrap Around Balcony
- Principle Bedroom with En Suite
- Town Centre Location
- Well Sized Living Room
- Estimated Rental Price : £1,200 pcm
- EPC : B (81)



## Description

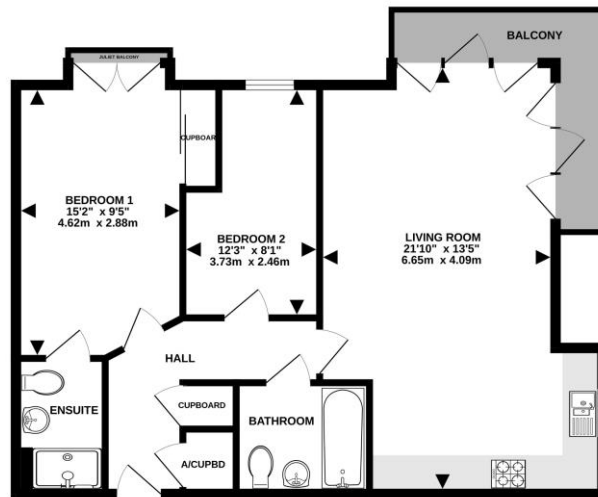
Bridges Estate Agents are proud to offer to the market this fine example of a well loved, two bedroom town centre apartment. The property sits on the second floor with an elevated pitch overlooking much of Basingstoke with a south facing aspect this allows the apartment to enjoy sunlight all day. The accommodation comprises an entrance hall with storage cupboards, three piece family bathroom, principle bedroom with built in wardrobes, Juliette balcony and an en suite shower room, there is a second bedroom, then an open plan living space with kitchen area with built-in oven, microwave, fridge/freezer and dishwasher. Furthermore, the living room leads to a wrap-around balcony with space for a small table and chairs.

## Outside

Externally there is allocated parking which is visible from the balcony and visitor parking as well as use of the communal gardens. Winterthur Way is an apartment complex located in the heart of Basingstoke town centre offering the opportunity to live or invest in this landmark building. The popular Festival Place and The Malls are a short walk away where there is a wide range of shopping and recreational facilities including bars, restaurants and a cinema; as well as the mainline railway station which is well served with regular commuter services to London Waterloo in approximately 45 minutes. The M3 motorway runs just south of Basingstoke with access to London and the south. The location makes this apartment complex perfect for commuters.

## Floorplan

SECOND FLOOR



While every attempt has been made to ensure the accuracy of the floorplan contained here, measurements of floors, elevations, areas and any other data are approximate and are not intended to be used for any purpose other than that of a guide only. The services, systems and appliances shown have not been tested and no guarantee as to their operability or reliability can be given.  
Made with Metagon 02/23



To arrange a viewing please contact:

Tel: 01256 880001

Email: [basingstoke@bridges.co.uk](mailto:basingstoke@bridges.co.uk)

Important Notice - These particulars are set out as a general outline only for the guidance of intended purchasers and do not form part of any offer or contract and must not be relied upon as statements or representations of fact. Purchasers must satisfy themselves by inspection or otherwise as to their correctness.