



Two Bedroom Apartment

Coombe Way, Farnborough, Hampshire, GU14 7GD

Guide Price: £230,000

- Two Double Bedrooms
- Close to Town and Station
- En Suite and Bathroom
- Underground Secure Allocated Parking
- Gas Central Heating
- Balcony
- Estimated Rental Price: £1,250 pcm
- EPC: C (79)



Description

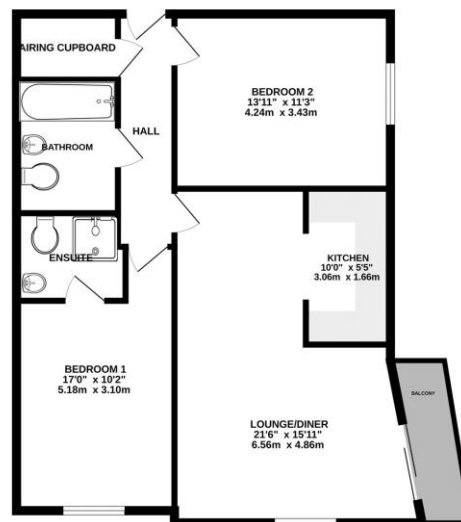
Brand House is situated within easy reach of both Farnborough mainline train station and town centre. This immaculately presented two bedroom apartment benefits from a well sized lounge/diner and an en suite shower room to the main bedroom. Further benefits include secure allocated underground parking, a balcony, gas central heating and double glazing throughout.

Outside

Externally, the property benefits from communal gardens and allocated parking.

Floorplan

GROUND FLOOR



While every attempt has been made to ensure the accuracy of the floorplan contained herein, measurements of floors, walls, doors and any other thing are approximate and no responsibility is taken for any error, omission or mis-statement. The plan is for illustrative purposes only and should be used as a guide to the general impression of the property. The layout, system and appearance shown here will be subject to change without notice and is not intended to be used as a guarantee of any kind.

Made with SketchUp ©2022



To arrange a viewing please contact:

Tel: 01252 361550

Email: info@bridges.co.uk

Important Notice - These particulars are set out as a general outline only for the guidance of intended purchasers and do not form part of any offer or contract and must not be relied upon as statements or representations of fact. Purchasers must satisfy themselves by inspection or otherwise as to their correctness.