



## Two Bedroom Semi-Detached House St Pauls Close, Tongham, Surrey, GU10 1EN

Offers in excess of: £380,000

- Two Bedrooms
- Semi Detached House
- Quiet Cul-de-Sac
- Conservatory
- Well Presented
- Driveway
- Rear Garden
- EPC: C (69)





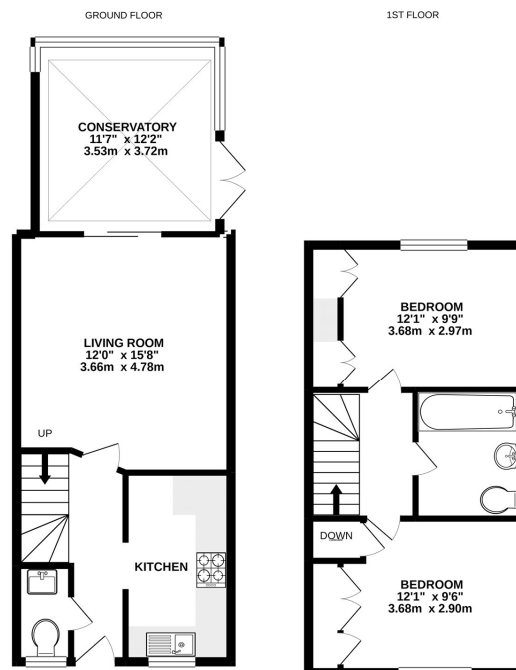
## Description

An immaculate two double bedroom semi-detached house, situated within a popular and quiet cul-de-sac within Tongham village. Downstairs boasts a living room and a generous size conservatory with double doors leading into the garden. There is also a fitted kitchen and cloakroom. Upstairs benefits from two double bedrooms, both with built-in wardrobes, and a fitted three piece bathroom suite. Further benefits include the opportunity to extend, subject to planning. Previous planning in place for a side extension.

## Outside

Outside boasts a well-maintained, private garden and a patio area ideal for alfresco dining and entertaining. There is also parking for multiple vehicles.

## Floorplan



Whilst every attempt has been made to ensure the accuracy of the floorplan contained here, measurements of doors, windows, rooms and any other items are approximate and no responsibility is taken for any error, omission or mis-statement. This plan is for illustrative purposes only and should be used as a guide for any prospective purchaser. The services, systems and appliances shown have not been tested and no guarantee is given as to their operability or efficiency can be given.  
Made with Metagen ©2021



To arrange a viewing please contact:

Tel: 01252 361550

Email: [info@bridges.co.uk](mailto:info@bridges.co.uk)

Important Notice - These particulars are set out as a general outline only for the guidance of intended purchasers and do not form part of any offer or contract and must not be relied upon as statements or representations of fact. Purchasers must satisfy themselves by inspection or otherwise as to their correctness.