



## Six Bedroom Detached House

**Park Road, Camberley, Surrey, GU15 2SR**

Offers in excess of: £999,999

- Five/Six Bedrooms
- Detached Period Home
- Extended but in Need of Finishing
- Feature Open Plan Kitchen/Dining Room
- Rear Views onto Watchetts Park
- 0.23 of an Acre Plot
- Ample Driveway Parking
- EPC: C (75)



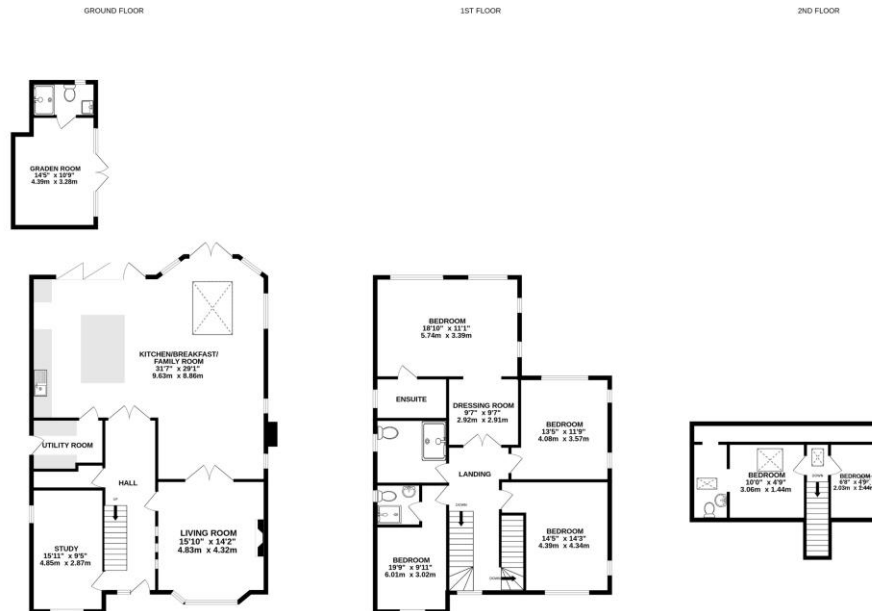
## Description

Located in a sought after location within easy access to Camberley town centre, is this extended five/six bedroom 1930's detached home. The current owners have created contemporary open plan living space with flexible accommodation over three floors making this an ideal home for the modern family. The accommodation comprises of a front aspect living room, feature open plan refitted kitchen opening to the dining room and family room that is ideal for entertaining. There is a further utility room, study and cloakroom space all on the ground floor. To the first floor you have the principle bedroom with vaulted ceilings, dressing area and an en suite bathroom, a further double bedroom with an en suite shower room, two further double bedrooms and a family bathroom. And lastly, to the second floor, you have two further bedrooms/an office and a cloakroom. To note, the property has been updated by the current owners but still requires completion. An internal inspection is highly recommended to truly appreciate all that this property has to offer.

## Outside

Externally, the property benefits from a spacious 0.23 of an acre plot with a south/easterly aspect rear garden that is mainly laid to lawn with a spacious patio area, landscaped barbeque area with space and a hard standing as well as an office/garden room with an en suite shower room. To the front this home offers ample driveway parking and gated rear access.

## Floorplan



Whilst every attempt has been made to ensure the accuracy of the floorplan contained herein, measurements of doors, windows, rooms and any other items are approximate and no responsibility is taken for any error, omission or mis-statement. This plan is for illustrative purposes only and should be used as such by any prospective purchaser. The services, systems and appliances shown have not been tested and no guarantee as to their operability or efficiency can be given.  
Made with Metropix ©2024



TO ARRANGE A VIEWING PLEASE CONTACT:

Tel: 01276 685544 or Email:

[camberley@bridges.co.uk](mailto:camberley@bridges.co.uk)



Important Notice - These particulars are set out as a general outline only for the guidance of intended purchasers/tenants and do not form part of any offer or contract and must not be relied upon as statements or representations of fact. Purchasers/Tenants must satisfy themselves by inspection or otherwise as to their correctness.