



Three Bedroom Detached Bungalow

Lower Weybourne Lane, Farnham, Surrey, GU9 9HN

Price: £550,000

- Three Bedrooms
- Detached Home
- Beautiful Garden
- Driveway/Garage
- Generous Plot
- Walking Distance to Popular Schools
- No Onward Chain
- EPC : E (49)



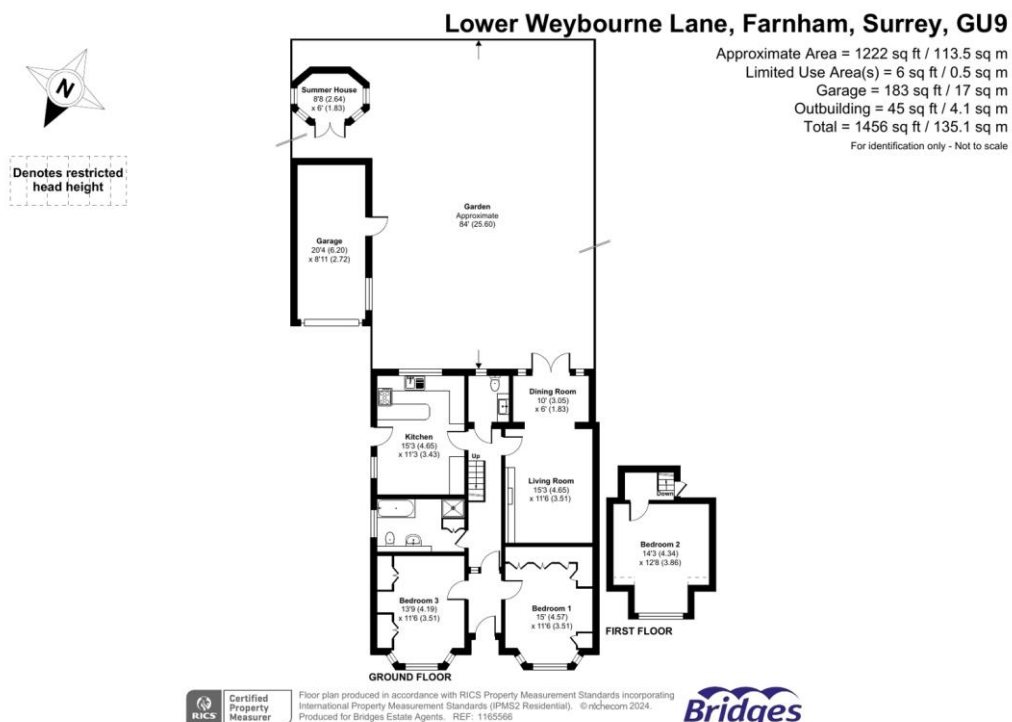
Description

A fantastic opportunity to acquire this impressive three double bedroom detached family home situated on a generous plot within close proximity to popular schools. The downstairs comprises two double bedrooms with bayfront windows allowing for plenty of natural light and both featuring built in wardrobes. The spacious lounge opens onto a dining room providing access to the rear garden. The kitchen/breakfast room offers fantastic views of the rear garden and offers space for both integrated and freestanding appliances. Additionally, there is a downstairs cloakroom and a four piece family bathroom suite. On the first floor there is a generously sized double bedroom. The property offers wonderful scope to extend (STPP).

Outside

The property offers an exceptional outside space, boasting a corner plot with an ample driveway for multiple vehicles, and a detached garage. The rear garden is beautifully presented, offering a well kept lawn, matured flowers and shrubs, and a patio area ideal for those who love to entertain.

Floorplan



To arrange a viewing please contact:

Tel: 01252 361550

Email: info@bridges.co.uk

Important Notice - These particulars are set out as a general outline only for the guidance of intended purchasers and do not form part of any offer or contract and must not be relied upon as statements or representations of fact. Purchasers must satisfy themselves by inspection or otherwise as to their correctness.