



Five Bedroom Detached House

Coleford Bridge Road, Mytchett, Surrey, GU16 6DH

Offers in excess of: £760,000

- Five Bedrooms
- Large Detached Family Home
- Underfloor Heating in the Kitchen/Breakfast Room
- Driveway Parking for Multiple Vehicles
- Rear Garden in Excess of 100ft
- Garage
- Prime Village Location
- EPC : D (60)



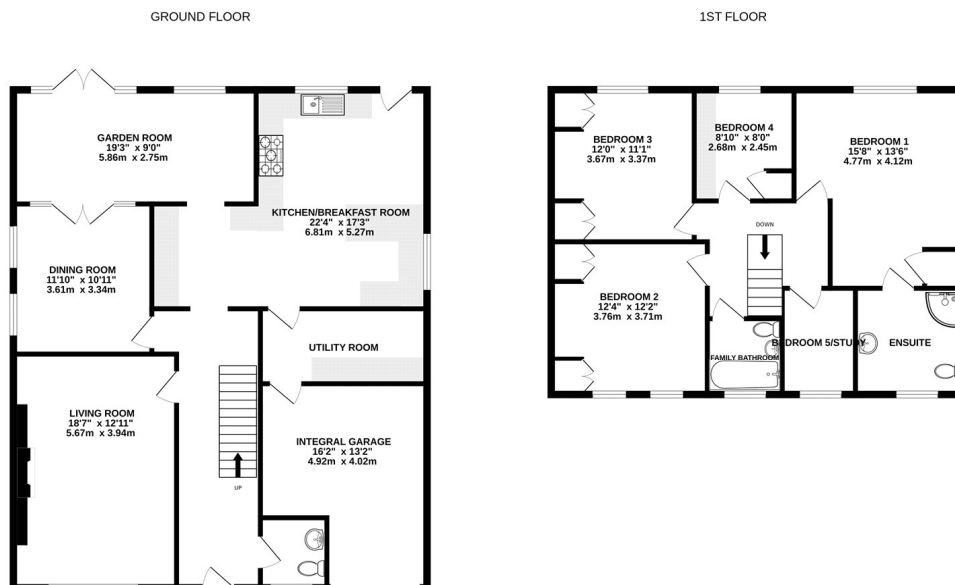
Description

Situated in the popular village of Mytchett, a substantial five bedroom detached family home. The property has been extended by the current owners and now offers a spacious kitchen/breakfast room with underfloor heating, generous living room with feature fireplace, dining room which leads onto the garden room and utility room leading onto the garage. Upstairs there are four double bedroom, with the master benefitting from en suite bathroom, and a fifth single bedroom/study.

Outside

To the front there is driveway parking for multi vehicles and to the rear there is a delightful terrace area to enjoy the South Westerly facing garden which measures approximately over 100ft and is mainly laid to lawn.

Floorplan



Whilst every attempt has been made to ensure the accuracy of the floorplan contained here, measurements of doors, windows, rooms and any other items are approximate and no responsibility is taken for any error, omission or mis-statement. This plan is for illustrative purposes only and should be used as such by any prospective purchaser. The services, systems and appliances shown have not been tested and no guarantee as to their operability or efficiency can be given.
Made with Metropix 1/2023



To arrange a viewing please contact:

Tel: 01252 361550

Email: info@bridges.co.uk

Important Notice - These particulars are set out as a general outline only for the guidance of intended purchasers and do not form part of any offer or contract and must not be relied upon as statements or representations of fact. Purchasers must satisfy themselves by inspection or otherwise as to their correctness.