

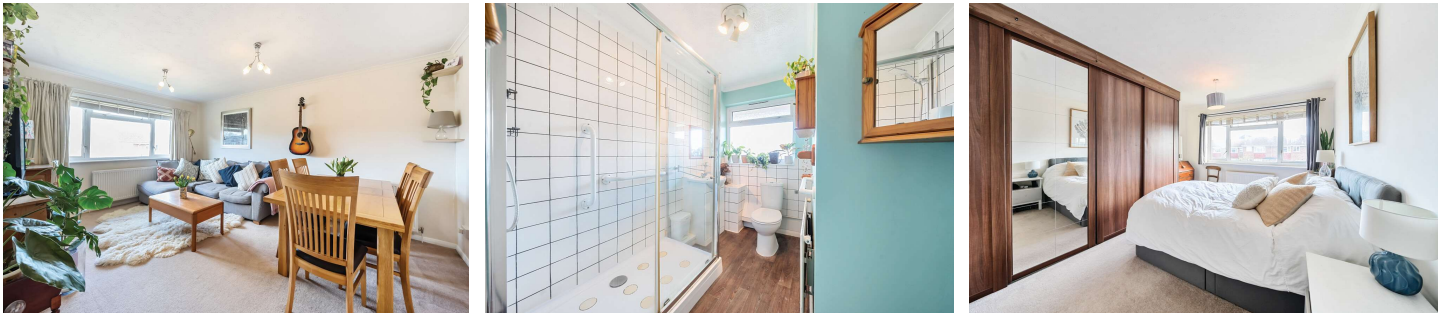


Two Bedroom Maisonette

Ellison Way, Tongham, Surrey, GU10 1AY

Price: £260,000

- Two Double Bedrooms
- Modern Kitchen and Bathroom
- Private Garden and Garage
- Gas Central Heating
- Double Glazing
- Lease in Excess of 900 Years
- Close to Village Shops and Amenities
- EPC: C (74)



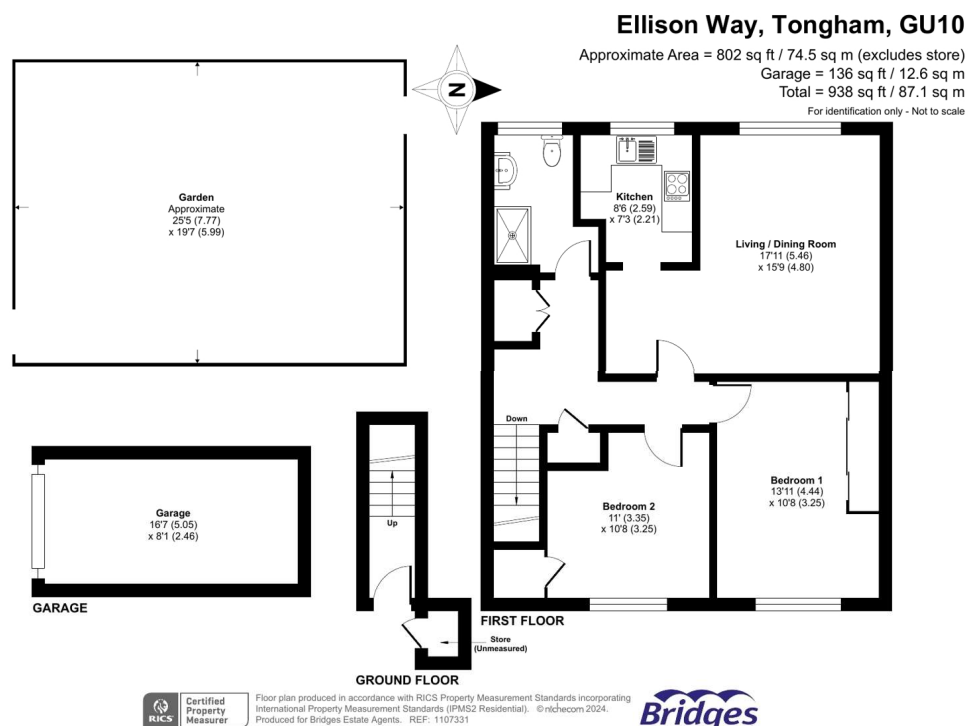
Description

****COMPLETE CHAIN ABOVE**** Set in the heart of the quaint village of Tongham is this spacious and airy two-bedroom maisonette with a private garden and garage. The location is ideal, the property is only minutes' walk from the local village shops and famous Hogs Back Brewery whilst also offering easy access onto the A331, A3 and M3. The maisonette is presented in immaculate condition throughout, with a modern kitchen, two good size double bedrooms with built in storage, a shower-room, and a large living/dining room. The property has a long lease well in excess of 900 years, a handy garage in a nearby block and a garden found at the back of the property. Located very close to all the brilliant village shops and the local amenities.

Outside

To the front is a well-kept section of lawn, with a pathway which leads up to the front door. The garden is found at the rear of the property and perfect for relaxing and enjoying the sunshine. There is a section of lawn, a shed and a rotary washing line, all enclosed by fencing.

Floorplan



To arrange a viewing please contact:

Tel: 01252 361550

Email: info@bridges.co.uk

Important Notice - These particulars are set out as a general outline only for the guidance of intended purchasers and do not form part of any offer or contract and must not be relied upon as statements or representations of fact. Purchasers must satisfy themselves by inspection or otherwise as to their correctness.