



## Four Bedroom Link Detached House

**Compton Way, Sherfield-on-Loddon, Hook, Hampshire, RG27 0SQ**

Price: £625,000

- Four Bedrooms
- Car Port and Garage
- En Suite Shower Room to Principal Bedroom
- Downstair Cloakroom
- Generous Kitchen/Breakfast Room
- Short Drive to Basingstoke Town
- No Onward Chain
- EPC : C (70)



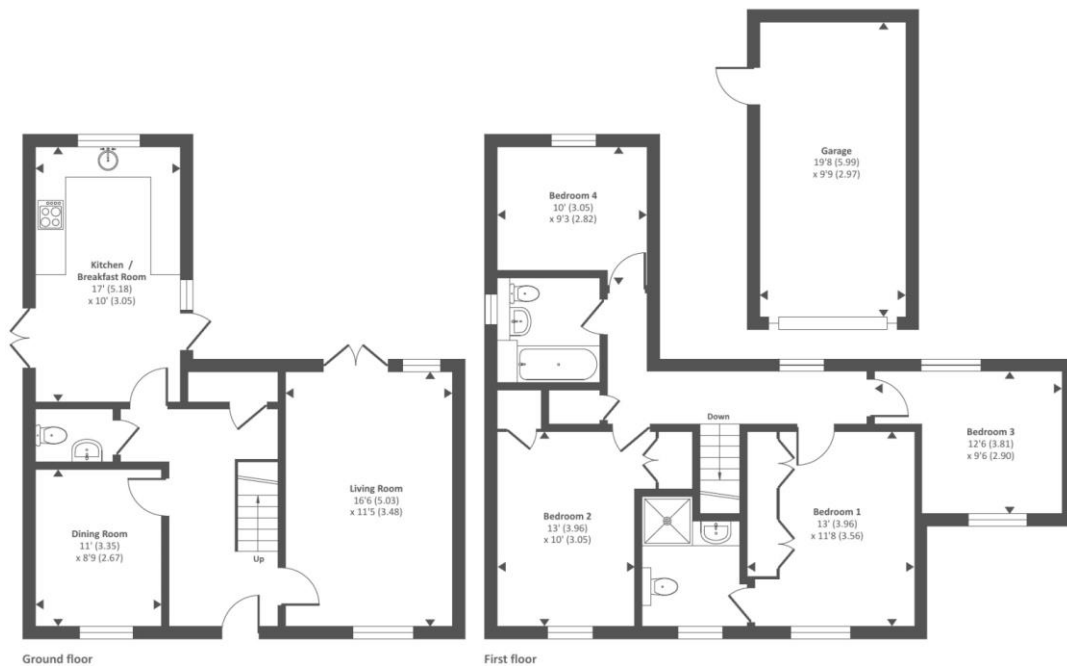
## Description

Located within the popular Sherfield Park development sits this four bedroom link-detached family home. Built in 2005 by Croudace Homes, the property comprises a spacious, dual aspect living room as well as a separate dining room, kitchen/breakfast room and a downstairs cloakroom. Upstairs there is four well proportioned bedrooms, with the principal bedroom also benefitting from an en suite shower room. There is also a family bathroom located on the first floor.

## Outside

To the side of the property there is a car port with space for several vehicles, leading through to a garage for additional parking. The side door of the garage opens up over the properties mainly laid to lawn rear garden, enclosed by a picket fence. The property is just a short drive from Basingstoke Town Centre, which offers a range of amenities for shopping and dining as well as having Basingstoke Train Station nearby, ideal for mainline access into London Waterloo.

## Floorplan



To arrange a viewing please contact:

Tel: 01256 769999

Email: [hook@bridges.co.uk](mailto:hook@bridges.co.uk)

Important Notice - These particulars are set out as a general outline only for the guidance of intended purchasers and do not form part of any offer or contract and must not be relied upon as statements or representations of fact. Purchasers must satisfy themselves by inspection or otherwise as to their correctness.