



Two Bedroom Bungalow

Lemon Grove, Whitehill, Bordon, Hampshire, GU35 9BE

Offers in excess of: £325,000

- Two Double Bedrooms
- Bungalow
- Desirable Location
- No Onward Chain
- Recently Renovated
- Driveway/Garage
- Low Maintenance Garden
- EPC : TBC



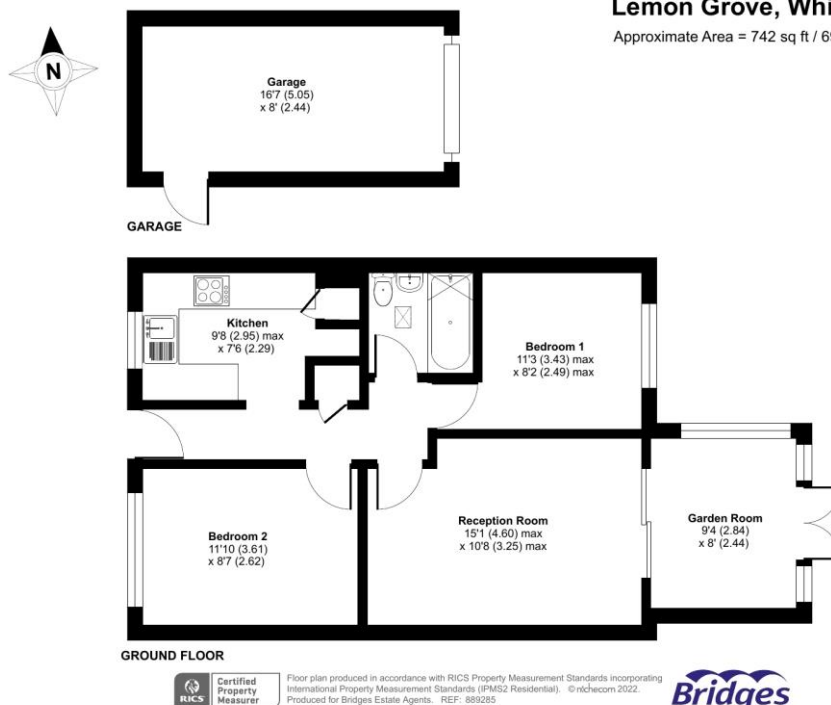
Description

Available to the market with no onward chain is this delightful two bedroom bungalow, situated within a popular cul-de-sac location. Having been much improved by the current owner this property offers the very best of contemporary living. The accommodation comprises of two double bedrooms, a recently refitted kitchen with an eye level oven and units, an attractive lounge that in turn leads into an extended garden/dining room. In addition, there is a three piece family bathroom suite, cleverly designed and boasting natural light entering from a light tunnel.

Outside

To the front of this impressive bungalow is a driveway for multiple vehicles. The rear garden is low maintenance and well presented, mostly paved and offers access to a garage.

Floorplan



To arrange a viewing please contact:

Tel: 01252 361550

Email: info@bridges.co.uk

Important Notice - These particulars are set out as a general outline only for the guidance of intended purchasers and do not form part of any offer or contract and must not be relied upon as statements or representations of fact. Purchasers must satisfy themselves by inspection or otherwise as to their correctness.