



## Two Bedroom Apartment

**Southwell Park Road, Camberley, Surrey, GU15 3GL**

Guide Price: £230,000

- Two Bedrooms
- Open Plan Kitchen/Living Room
- Gated Parking
- Camberley Town Centre
- Ideal Investment or First Time Buy
- No Onward Chain
- Estimated Rental Price : £1,400 pcm
- EPC : B (81)



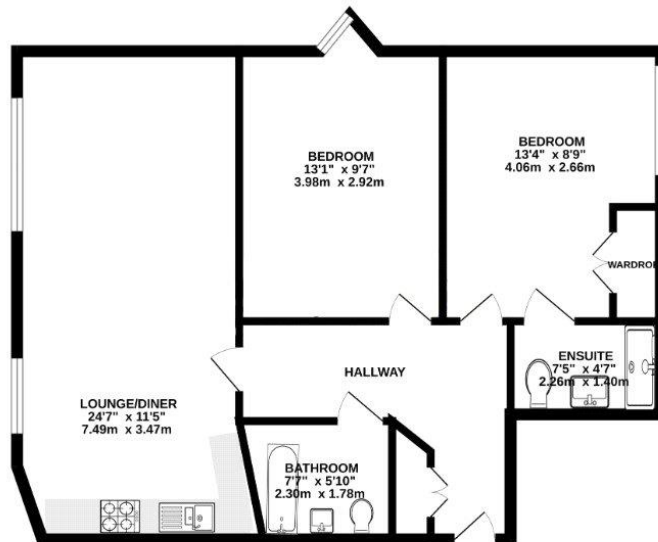
## Description

Offered to the market, with no onward chain, is this highly desirable two bedroom first floor apartment. The property benefits from two double bedrooms, the principal bedroom with an en suite and built in wardrobes, a family bathroom, and a spacious open plan kitchen/living room. The property is walking distance of the centre of Camberley with its many shops, restaurants, and train station.

## Outside

There are communal grounds and underground allocated parking via gated access.

## Floorplan



Whilst every attempt has been made to ensure the accuracy of the floorplan contained herein, measurements of floors, windows, rooms and any other items are approximate and no responsibility is taken for any error, omission or misstatement. This plan is for illustrative purposes only and should not be used as such by any prospective purchaser. The overall, typical and approximate dimensions have not been tested and no guarantee as to their accuracy or efficiency can be given.  
Made with floorplan 10/20



To arrange a viewing please contact:

Tel: 01252 361550

Email: [info@bridges.co.uk](mailto:info@bridges.co.uk)

Important Notice - These particulars are set out as a general outline only for the guidance of intended purchasers and do not form part of any offer or contract and must not be relied upon as statements or representations of fact. Purchasers must satisfy themselves by inspection or otherwise as to their correctness.