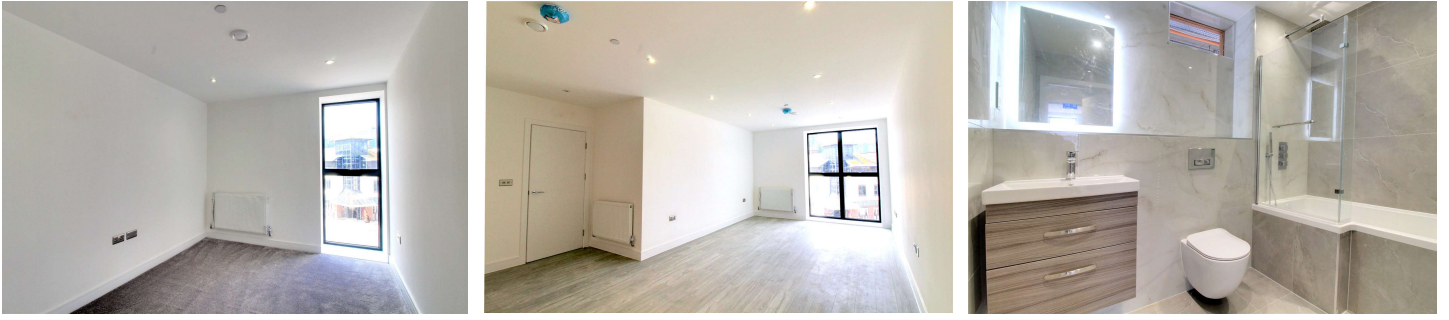


## One Bedroom Apartment

**High Street, Camberley, GU15 3RN**

Asking Price: £285,000

- One Bedroom
- Apartment
- Close to Town Centre
- Close to Train Station
- Modern Kitchens
- Family Bathroom
- Ideal Investment Opportunity
- 10 Year Warranty

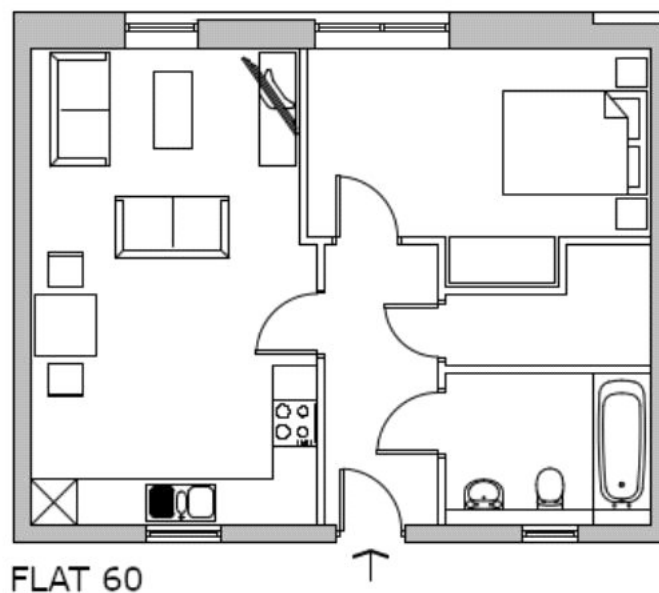


## Description

Within an exquisite collection of new homes in Camberley Town Centre, is this one double bedroom apartment inside an iconic commercial building to be converted into residential properties fashioned with elegance and serenity on the south end of the High Street.

This stunning and atmospheric building holds an exciting prospect for home buyers and investors - aiming for the boost effect of the regeneration scheme of Camberley Town Centre as well as the potential connection of National Railway Services directly into London Waterloo. A stones throw away from High Street, restaurants, fashion chains along with easy access into Central London via automobile or public transport, at Kings Court you will always be adequately connected.

## Floorplan



To arrange a viewing please contact:

Tel: 01276 685544

Email: [info@orchardbybridges.co.uk](mailto:info@orchardbybridges.co.uk)

Important Notice - These particulars are set out as a general outline only for the guidance of intended purchasers and do not form part of any offer or contract and must not be relied upon as statements or representations of fact. Purchasers must satisfy themselves by inspection or otherwise as to their correctness.