

Two Bedroom Apartment

High Street, Camberley, GU15 3RN

Asking Price: £385,000

- Two Bedrooms
- Close to Town Centre
- Close to Train Station
- Allocated Parking
- Modern Kitchens
- Family Bathroom
- Ideal Investment Opportunity
- 10 Year Warranty



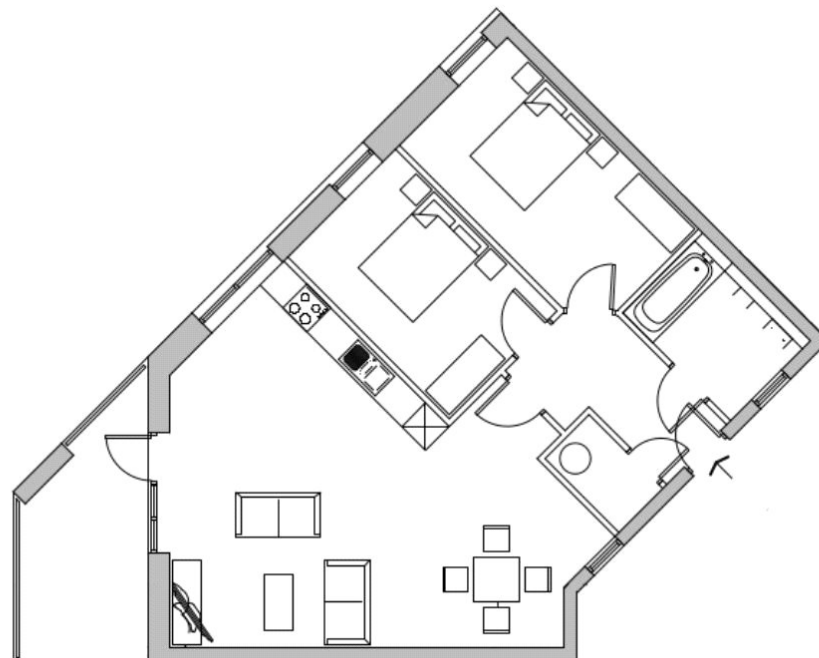
Description

Within an exquisite collection of new homes in Camberley Town Centre, is this two bedroom apartment inside an iconic commercial building to be converted into residential properties fashioned with elegance and serenity on the south end of the High Street.

The apartment also benefits from one allocated parking space.

This stunning and atmospheric building holds an exciting prospect for home buyers and investors - aiming for the boost effect of the regeneration scheme of Camberley Town Centre as well as the potential connection of National Railway Services directly into London Waterloo. A stone's throw away from High Street, restaurants, fashion chains along with easy access into Central London via automobile or public transport, at Kings Court you will always be adequately connected.

Floorplan



FLAT 56



To arrange a viewing please contact:

Tel: 01276 685544

Email: info@orchardbybridges.co.uk

Important Notice - These particulars are set out as a general outline only for the guidance of intended purchasers and do not form part of any offer or contract and must not be relied upon as statements or representations of fact. Purchasers must satisfy themselves by inspection or otherwise as to their correctness.