

Two Bedroom Ground Floor Apartment London Road, Old Basing, Basingstoke, RG24 7JL

Offers Over: £200,000

- Two Bedrooms
- Fully Integrated Kitchen
- Semi-Rural Location
- Underfloor Heating
- Open Plan Living Space
- Two Allocated Parking Spaces
- Idyllic Communal Gardens
- EPC : D (57)



Description

A stylish ground floor apartment with an idyllic communal garden, which has the river Lyde running through with its resident ducks and other wildlife. In a converted former office building is this two double bedroom property. Benefitting from electric underfloor heating throughout, a fully fitted kitchen with dining space, LED mood lighting under the units, open plan living room, bathroom with a shower, bath and heated towel rail. Additional benefits include two parking spaces and video entry phone system. If you are looking for a semi-rural location, with good access to Basingstoke and beyond then this would be a good pick for you.

Outside

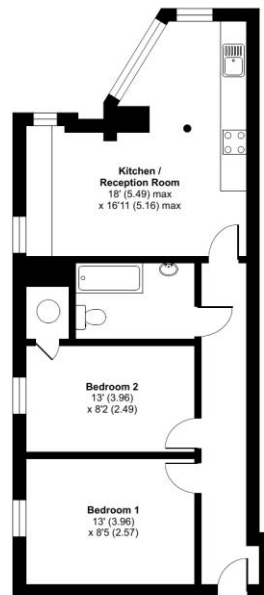
The grounds are easily accessed via the A30 and via Greywell Road entrance. The grounds provide visitor parking, with two spaces allocated to this apartment. There is also a secure bike store, plus a communal garden at the rear of the building with picnic bench and the tranquil river Lyde at the end of the gardens.

Floorplan



London Road, Old Basing, Basingstoke, RG24

Approximate Area = 645 sq ft / 59.9 sq m
For identification only - Not to scale



GROUND FLOOR



Floor plan produced in accordance with RICS Property Measurement Standards incorporating International Property Measurement Standards (IPMS2 Residential). ©vicki.com 2022. Produced for Bridges Estate Agents. REF: 823646



To arrange a viewing please contact:

Tel: 01256 769999

Email: info@bridges.co.uk

Important Notice - These particulars are set out as a general outline only for the guidance of intended purchasers and do not form part of any offer or contract and must not be relied upon as statements or representations of fact. Purchasers must satisfy themselves by inspection or otherwise as to their correctness.