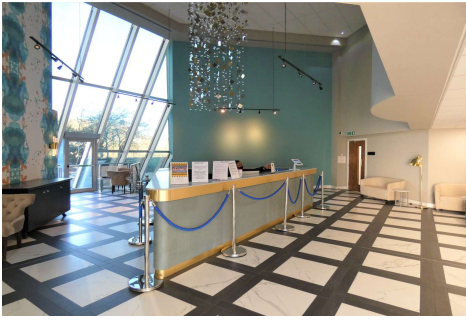


One Bedroom Apartment

Churchill Way, Basingstoke, RG21 7AA

Price: £137,500

- One Double Bedroom
- Town Centre Apartment
- Concierge Service
- Open Plan Living/Kitchen
- Well Presented
- Ideal for Festival Place and Amenities
- Estimated Rental Figure: £1000pcm
- EPC: C (71)



Description

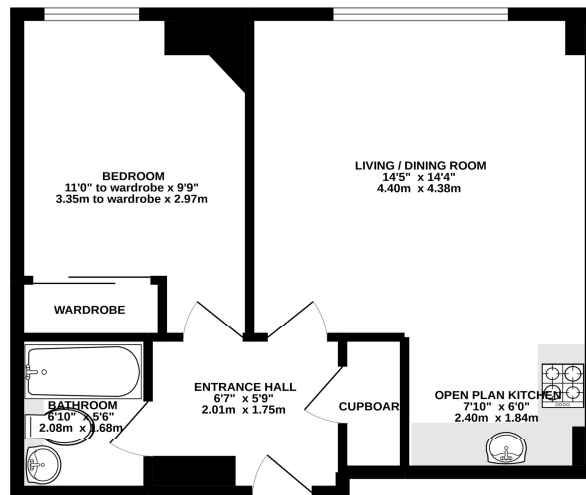
Perfectly positioned for direct access into Festival Place, amenities and shops is this well presented first floor apartment. Set within a short distance of the A339/M3, mainline train and bus stations, the property is to be sold as an ongoing rental investment and offers a concierge service for residents, lift access and post room. The apartment comprises of an open plan living/dining room, open plan modern kitchen, electric heating, double bedroom with wardrobe, modern fitted kitchen and is in good decorative order throughout. Ideal Investment as ongoing concern with no onward chain complications. Cash Buyers Only.

Outside

Externally the apartment offers communal gardens and walking bridge access to Festival Place.

Floorplan

GROUND FLOOR



Whilst every attempt has been made to ensure the accuracy of the floorplan contained here, measurements of doors, windows, rooms and any other items are approximate and no responsibility is taken for any error, omission or misstatement. This plan is for illustrative purposes only and should be used as such by any prospective purchaser. The architect, surveyor and applicable laws have not been visited and no guarantee as to their quantity or efficiency can be given.
Made with Metreplan v10/02



TO ARRANGE A VIEWING PLEASE CONTACT:
Tel: **01256 880001** or Email: **info@bridges.co.uk**



Important Notice - These particulars are set out as a general outline only for the guidance of intended purchasers/tenants and do not form part of any offer or contract and must not be relied upon as statements or representations of fact. Purchasers/Tenants must satisfy themselves by inspection or otherwise as to their correctness.