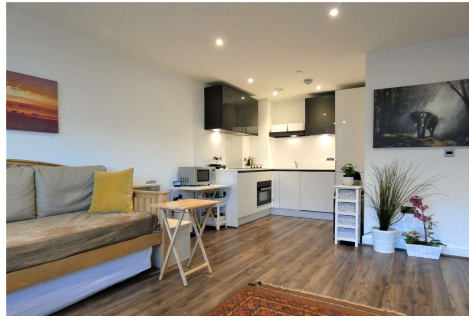
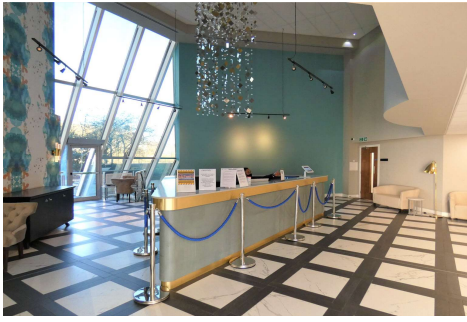


One Bedroom Apartment

Churchill Way, Basingstoke, RG21 7AA

Asking Price: £150,000

- One Double Bedroom
- Town Centre Apartment
- Concierge Service
- Open Plan Living/Kitchen
- Well Presented
- Ideal for Festival Place and Amenities
- Estimated Rental Figure: £1000 pcm
- EPC : C (71)



Description

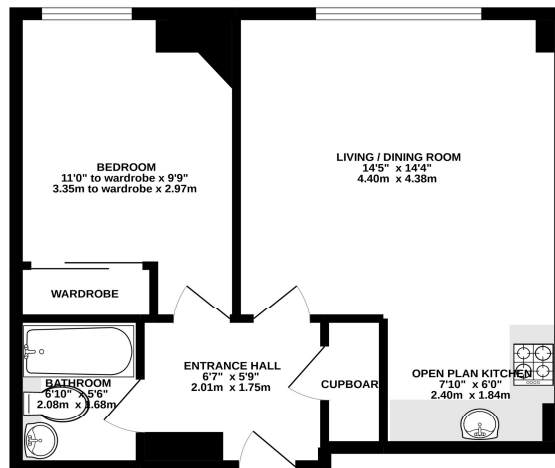
Perfectly positioned for direct access into Festival Place, amenities and shops is this well presented first floor apartment. Set within a short distance of the A339/M3, mainline train and bus stations, the property is to be sold as an ongoing rental investment and offers a concierge service for residents, lift access and post room. The apartment comprises of an open plan living/dining room, open plan modern kitchen, electric heating, double bedroom with wardrobe, modern fitted kitchen and is in good decorative order throughout. Ideal Investment as ongoing concern with no onward chain complications.

Outside

Externally the apartment offers communal gardens and walking bridge access to Festival Place.

Floorplan

GROUND FLOOR



Whilst every attempt has been made to ensure the accuracy of the floorplan contained herein, measurements of doors, windows, rooms and any other parts are approximate and no responsibility is taken for any error or omission of any kind. This plan is for illustrative purposes only and should be used as a guide to any prospective purchaser. The layout, fixtures and appliances shown have not been tested and no guarantee as to their operability or efficiency can be given. Made with MetreX 10002



To arrange a viewing please contact:

Tel: 01256 880001

Email: info@bridges.co.uk

Important Notice - These particulars are set out as a general outline only for the guidance of intended purchasers and do not form part of any offer or contract and must not be relied upon as statements or representations of fact. Purchasers must satisfy themselves by inspection or otherwise as to their correctness.