



Two Bedroom Semi-Detached House

Weston Road, Upton Grey, Basingstoke, Hampshire, RG25 2RH

Price: £450,000

- Two Double Bedrooms
- Village Location
- Two Bathrooms and Cloakroom
- Underfloor Heating Downstairs
- Air Source Heat Pump
- Countryside Views
- Parking for Two Vehicles
- EPC: C (79)



Description

Discover this semi detached two bedroom house, built new in 2021 by an individual builder, located in the charming Hampshire hamlet of Upton Grey.

This beautifully designed home features a modern kitchen with Silestone worktops, a butler's sink, high end appliances, including a country style range cooker, fridge/freezer, integrated slimline dishwasher, and washing machine. The ground floor is equipped with underfloor heating, and the open plan living/dining area at the rear benefits from double patio doors that open onto a private garden. Upstairs, you'll find two generously sized double bedrooms. The main bedroom includes an en suite with a shower, while the main bathroom is fitted with a relaxing bath. The property also provides two parking spaces at the front.

Upton Grey offers picturesque views and delightful local walks. The village features a post office/shop, a village hall, and the highly-regarded Hoddington Arms pub. A short drive will take you to Odiham, where you'll find a variety of shops, bars, and restaurants, and it's also conveniently located a short drive from Basingstoke.

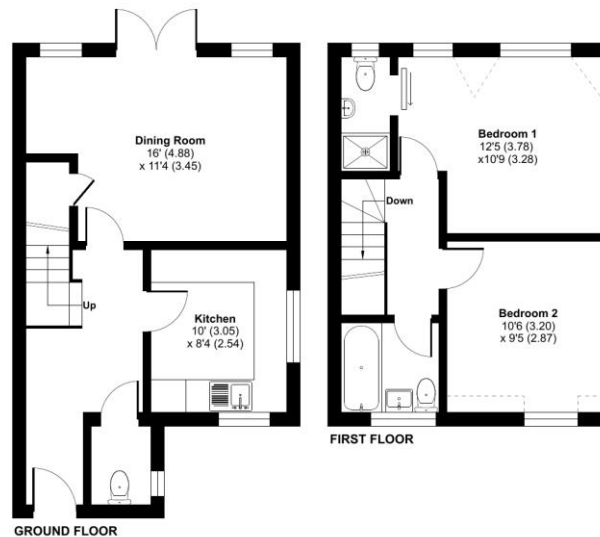
Outside

The exterior of the property features two dedicated parking spaces at the front, along with an additional visitor parking space. The front garden is thoughtfully landscaped, with attractive borders filled with shrubs and plants, offering a welcoming first impression. The house faces open fields and scenic countryside, providing a serene and picturesque view. At the rear, you'll find a private, enclosed garden predominantly laid to lawn, complemented by a generously sized full-width patio, ideal for outdoor entertaining. A side access gate adds convenience to this delightful outdoor space.

Floorplan

Weston Road, Upton Grey, Basingstoke, RG25

Approximate Area = 730 sq ft / 67.8 sq m
Limited Use Area(s) = 12 sq ft / 1.1 sq m
Total = 742 sq ft / 68.9 sq m
For identification only - Not to scale



Floor plan produced in accordance with RICS Property Measurement Standards incorporating International Property Measurement Standards (IPMS2 Residential). ©victwcom 2024. Produced for Bridges Estate Agents. REF: 1177399



To arrange a viewing please contact:

Tel: 01256 769999

Email: info@bridges.co.uk

Important Notice - These particulars are set out as a general outline only for the guidance of intended purchasers and do not form part of any offer or contract and must not be relied upon as statements or representations of fact. Purchasers must satisfy themselves by inspection or otherwise as to their correctness.