

Three Double Bedroom Town House

St. James Close, Fleet, GU51 5BG

Price: £400,000

- Three Double Bedrooms
- En Suite Shower Room
- Town Centre Location
- No Onward Chain
- Enclosed Garden
- Allocated Parking
- Good Decorative Order
- EPC : C (79)



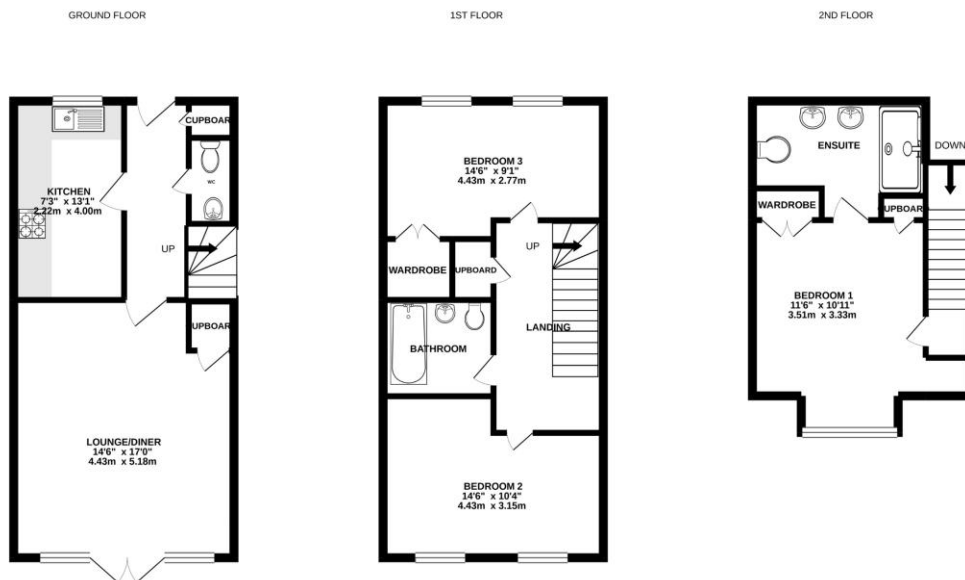
Description

Offered with no onward chain complications, is this well presented three double bedroom town house, situated within close proximity to Fleet town centre and also walking distance to the mainline train station. The property provides spacious living accommodation across three floors. On the first floor there are two double bedrooms, family bathroom and ample storage. The principal bedroom is found on the second floor which also benefits from having an en suite with twin sinks. The ground floor offers a cloakroom, modern integrated kitchen and living room with French doors leading out to the garden. Viewings are highly advised.

Outside

The property benefits from an allocated parking space to the rear and an enclosed garden which offers patio seating which is ideal for entertaining, leading to the lawned area. There also is a gate providing rear access.

Floorplan



Whilst every attempt has been made to ensure the accuracy of the floorplan contained here, measurements of doors, windows, rooms and any other items are approximate and no responsibility is taken for any error, omission or mis-statement. This plan is for illustrative purposes only and should be used as such by any prospective purchaser. The services, systems and appliances shown have not been tested and no guarantee as to their operability or efficiency can be given.
Made with Memtop ©2021



To arrange a viewing please contact:

Tel: 01252 361550

Email: info@bridges.co.uk

Important Notice - These particulars are set out as a general outline only for the guidance of intended purchasers and do not form part of any offer or contract and must not be relied upon as statements or representations of fact. Purchasers must satisfy themselves by inspection or otherwise as to their correctness.